



17 Glendale Avenue Epping, VIC

 4

 2

 2

Spacious Home bathed in Sunlight

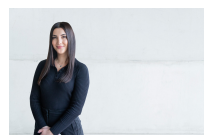
Located in a desirable pocket of Epping beholds this spacious home.

Price: \$485 per week

The property features:

- Four bedrooms, all with robes, hybrid flooring, main with split system and ensuite
- Kitchen, gas stove top, dishwasher, spacious meals area with heating, separate living space with heating and cooling
- Central bathroom, bathtub, separate toilet, full-width laundry
- Spacious backyard, verandah, garden shed, and two off-street car spaces

Well located, this home is within close proximity to Westfield Plenty Valley S/C, Sth Morang train/bus stations, quality schooling, parklands & great access to M80/Hume freeways via Findon/Oherns Rds.



Monica Dimitrijeska

monica.d@lovere.com.au



FLOOR PLAN

This floor plan including furniture, fixture measurements and dimensions are approximate and for illustrative purposes only. BoxBrownie.com gives no guarantee, warranty or representation as to the accuracy and layout. All enquiries must be directed to the agent, vendor or party representing this floor plan.

17 Glendale Avenue, Epping



17 Glendale Avenue

Epping, VIC