



2/25 Pickworth Drive Mill Park, VIC

3

1

1

Tailor-Made For Easy Living
Saturday @ 12.30pm

Auction This

Price: Sold \$632,000

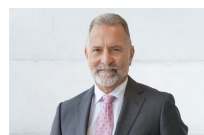
Enjoying the peace and privacy of a wonderful court location, this much loved one owner unit delivers an outstanding opportunity for 1st home buyers, downsizers or investors alike.

With its undeniable street appeal, prepare to be impressed by its sun filled interior spaces including a spacious formal lounge, 3 excellent bedrooms, two way bathroom, a family-sized Timber kitchen with plenty of cupboards overlooking the meals area that enjoys access to both the rear yard and the undercover BBQ area that's perfect for year round entertaining.

Add to all this, a Lock/Up garage, ducted heating/cooling, brand new carpets, quality drapes, immaculate presentation and more.

In the "Blue-Ribbon" Mill Park Heights locale where schools, shops and transport are just moments away, you'll be hard pressed finding a better location and better value for money ?..

Hard to fault, easy to buy ...



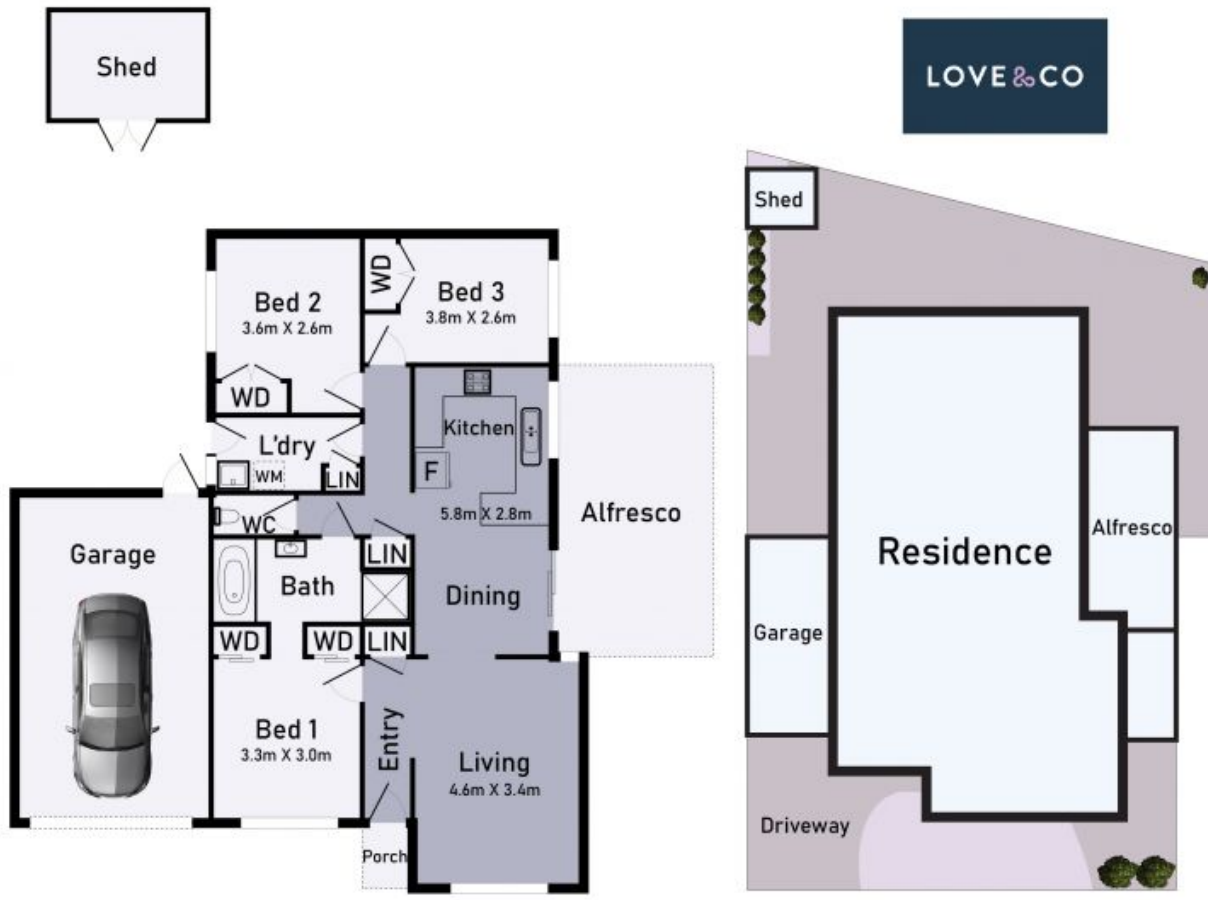
Roger Pettinella

0418 588 419
roger.p@lovere.com.au



John Gioftsidis

0410 522 195
john.g@lovere.com.au



2/25 Pickworth Drive Mill Park

* Dimensions are approximate and for illustrative purposes only



2/25 Pickworth Drive

Mill Park, VIC