



10/330 Johnston Street Abbotsford, VIC

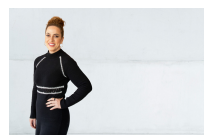
 2
  1
  1

Live An Exclusive Urban Lifestyle

Within a boutique low-rise complex just moments to the lush Yarra River, this stylish two bedroom property offers flexibility, security and inner-city lifestyle vibrancy. One of 12 and sprawled over two versatile floors, it's complemented by a light-filled reverse open plan. Showcasing fully-equipped kitchen, meals/family to private balcony, BIRs, heating/cooling and designated XL car space. Less than 5km to our CBD and with access to Fitzroy's trendy precinct, it's near popular eateries/bars, shops, Victoria Park Station and off-lead dog parks.

- * One of only 12 boutique apartment, set over two flexible floors with reverse open plan living
- * High semi-vaulted ceiling flows over airy family/meals
- * Stylish kitchen with s/s appliances and ample cabinetry
- * Entertainer's balcony + private ground floor courtyard
- * Comfy robed bedrooms serviced by dual access bathroom

Price: SOLD - \$710,000



Niki Castro
0414 334 900
niki.c@lovere.com.au



George Theocharis
0415 578 809
george.t@lovere.com.au



INTERNAL AREA: 83SQM APPROX.

Every precaution has been taken to establish accuracy of the information in this brochure but does not constitute any representation by the vendor or agent.