



12/815 Park Street Brunswick, VIC



Ground Floor Apartment With Sensational Space

Big in all the right places, this surprisingly spacious ground floor apartment sits at the rear of a boutique block and sets an impressive precedent for low maintenance living. It boasts a fabulous Brunswick location on the cusp of Parkville with Princess Park/Western Oval, cafes, Sydney Road shopping/dining, Melbourne University, and public transport not too far away. An especially tempting prospect for investors or buyers hesitant to sacrifice on space, the light-filled interior includes two double bedrooms (each with built in robes) a large bathroom/laundry as well as open plan kitchen, meals and living area. The lovely kitchen with timber countertops showcases quality appliances and ample storage. This remarkable apartment also features a wall mounted heater, quality carpets, window furnishings and a private outdoor space.

Price: SOLD - \$490,000

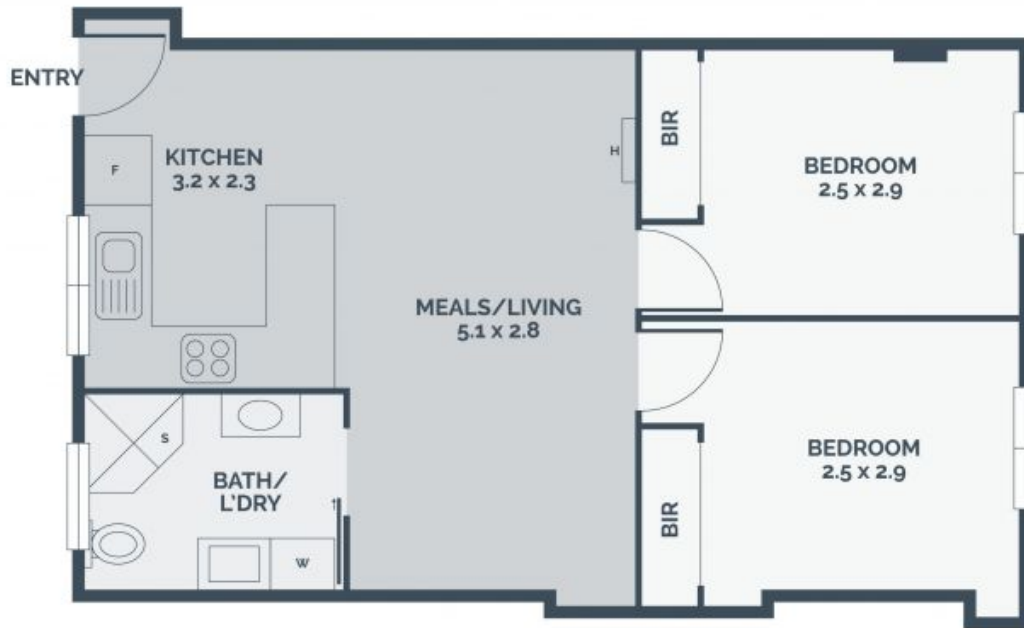
Due diligence checklist - for home and residential property buyers
<http://www.consumer.vic.gov.au/duediligencechecklist>



Kannan Subramanian | Jon Challands

0411 711 232
 kannan.s@lovere.com.au

0474228342
 jon.c@lovere.com.au



Every precaution has been taken to establish accuracy of the information in this brochure but does not constitute any representation by the vendor or agent.

12/815 Park Street

Brunswick, VIC

LOVE & CO