



2/39 Linton Drive Thomastown, VIC

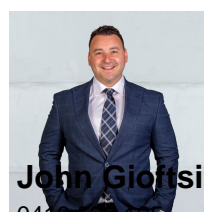


A Sanctuary of Style

Combining a unique set of features, this spacious and light-filled freestanding townhouse with no body corporate fees in a wonderful Thomastown neighbourhood delivers a fabulous low maintenance family lifestyle without compromise. Timeless interiors and quality fixtures make a stylish statement throughout large and flexible living zones including a dedicated lounge room, vast open plan meals and family zone overlooking a sizeable kitchen with a seamless flow out to an inviting year-round entertaining area. A ground level bedroom and bathroom further enhance this home's impressive credentials. A highly desirable home in a prized locale, further features include:

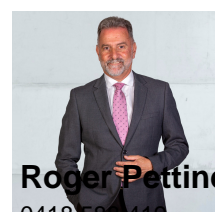
- Three bedrooms and three bathrooms
- Garage (with remote and rear access)
- Carport
- Hardwood floors

Price: Under Offer



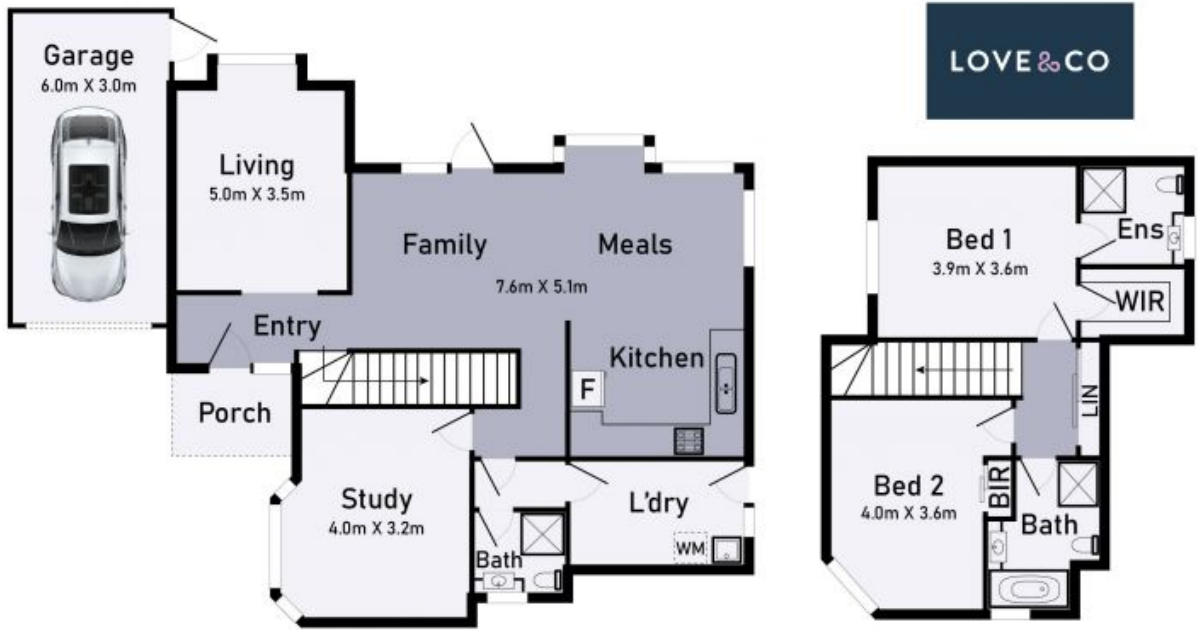
John Giotsidis

0410 522 195
john.g@lovere.com.au



Roger Pettinella

0418 588 419
roger.p@lovere.com.au



2/39 Linton Drive Thomastown

* Dimensions are approximate and for illustrative purposes only



LOVE & CO

2/39 Linton Drive

Thomastown, VIC