



33 Tonelli Crescent Mill Park, VIC



Family Functionality

Set in a quiet, yet remarkably convenient position, this instantly-enjoyable residence is enveloped by family-friendly spaces for a fabulous indoor/outdoor lifestyle. Stroll to Findon Primary, The Stables Shopping Centre and transport options from this superb home that offers three bedrooms (BIRs and en suite to master), light-filled formal lounge and dining zones, well-placed kitchen with expansive meals/family zone and a spacious rear yard with drive-through access from the enclosed double carport. Some of the many features include ducted heating and cooling, undercover entertaining area and large storage shed. A terrific first home and an even better investment.

Price: Sold \$721,000



John Gioftsdis

0410 522 195
john.g@lovere.com.au



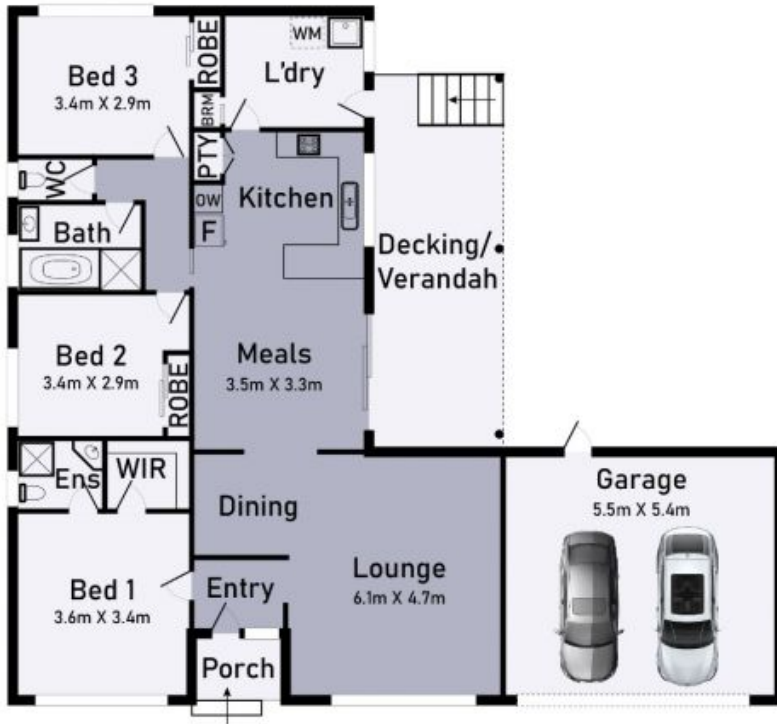
Jordan Knight

0434 969 667
jordan.k@lovere.com.au

Shed

BBQ

LOVE & CO



33 Tonelli Crescent Mill Park

* Dimensions are approximate and for illustrative purposes only



LOVE & CO

33 Tonelli Crescent

Mill Park, VIC