



11 Pindari Avenue Epping, VIC



**Prime Location For Home Or Investment**

Discover the ideal opportunity for first-time homebuyers and savvy investors in this well-located property. Situated just moments away from Westfield and Epping Plaza, with the convenience of Epping and South Morang train stations, plus a bus stop on McDonalds Road, this home offers unrivalled accessibility. Step inside to find a spacious lounge and dining area that basks in natural light, a central kitchen with an adjoining meals area, and three comfortable bedrooms, each boasting built-in robes. Outside, the well-established gardens provide a serene escape, and the double garage ensures secure parking and ample storage. With schools and parklands nearby, this property is the complete package for a fulfilling lifestyle.

**Price:** \$590,000

Due diligence checklist - for home and residential property buyers  
<http://www.consumer.vic.gov.au/duediligencechecklist>

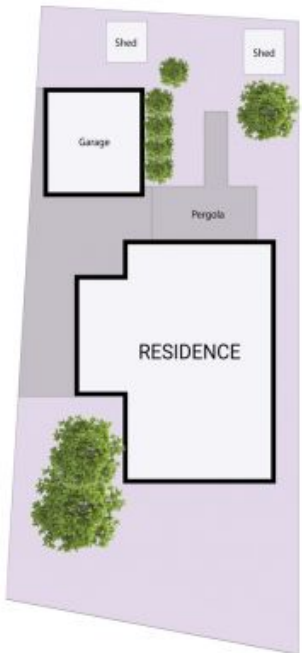


**Jim Kalakias**  
 0402 177 336  
 jim.k@lovere.com.au



**Ibby Zayat**  
 0412 469 545  
 ibby.z@lovere.com.au

# 11 Pindari Avenue, Epping



THE ABOVE PLAN IS AN ARTIST'S IMPRESSION ONLY, IT INCLUDES ELEMENTS THAT ARE FOR DISPLAY PURPOSES ONLY AND MAY NOT BE TO SCALE. LANDSCAPING SHOWN IS INDICATIVE ONLY. DIMENSIONS ARE APPROXIMATE.

