



206/15 Brunswick Road Brunswick East, VIC

2 2 1

**Location, Luxurious Lifestyle**

\*Sale by Set Negotiation - Offers close Monday 11th December at 5:00pm\*

**Price:** SOLD - \$655,000

Flooded with natural light and views that only a select few can enjoy. A stunning apartment that is simply a must see. A private balcony facing north views of the outer edges of Brunswick East and Fitzroy North and privacy away from the hustle and bustle of the modern world. This sanctuary is a place in which you can simply relax and let the stress of the day melt away.

Move straight in to this luxurious brand new two bedroom apartment featuring:

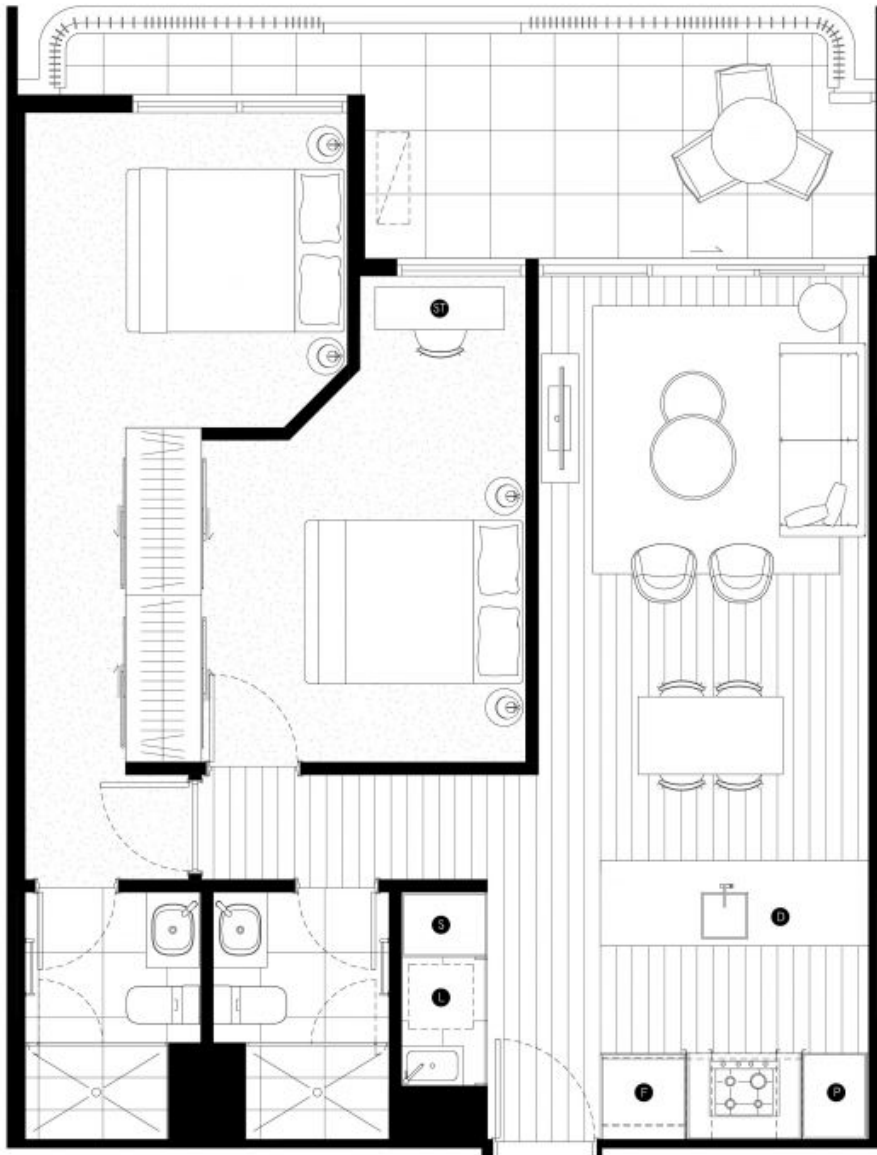
- \* Split system heating/cooling
- \* Fridge, dishwasher, Miele Gas cook top, electric oven
- \* Ample storage throughout



**Javit Denizhan**  
0422 055 928  
javit.d@lovere.com.au



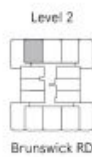
**Shane Yaman**  
0417 557 972  
shane.y@lovere.com.au



**B.  
E.**

**APT. 206**

<b>BED</b>	2	<b>F</b>	Fridge
<b>BATH</b>	2	<b>D</b>	Dishwasher
<b>CAR</b>	1	<b>L</b>	Laundry
<b>APT</b>	73.4m <sup>2</sup>	<b>P</b>	Pantry
<b>TER</b>	11.9m <sup>2</sup>	<b>S</b>	Storage
<b>TOTAL</b>	85.3m <sup>2</sup>	<b>ST</b>	Study



These plans are intended as a guide only. The dimensions and areas are approximate only and may not accurately represent the actual dimensions and areas of the residential lot or spaces or the spaces within them and are subject to change without notice. In addition, locations of utilities may vary during construction and fittings and fixtures on these plans are for illustrative purposes only. The areas are generally measured in accordance with the Property Council of Australia method of measurement. Prospective purchasers must rely on their own enquiries and should refer to the Contract of Sale and its schedules for all matters to be included in the purchase price of the residences, including plans, finishes, fixtures, fittings.

**LOVE & CO**

206/15 Brunswick Road

Brunswick East, VIC