



15 Keith Avenue Epping, VIC



### Location, Charm & Potential ? Dual Crossover

Nestled in a prime location with Peppercorn Park and the scenic Darebin Creek Trail at one end of the street, and the convenience of Epping Secondary School and a nearby bus stop at the other, this property presents an enticing opportunity for both first-time homebuyers and savvy investors. Boasting the unique distinction of being offered for the first time in nearly four decades, this residence exudes timeless charm with stunning floorboards throughout. Inside, a spacious lounge and dining area create a warm and inviting atmosphere, complemented by a sun-filled kitchen complete with a generous meals area. The three well-appointed bedrooms are serviced by a central bathroom, ensuring comfort and convenience.

- ? Charming floorboards throughout the property
- ? Spacious lounge and dining area
- ? Sun-filled kitchen with a generous meals area

**Price:** \$669,000



**Jim Kalakias**

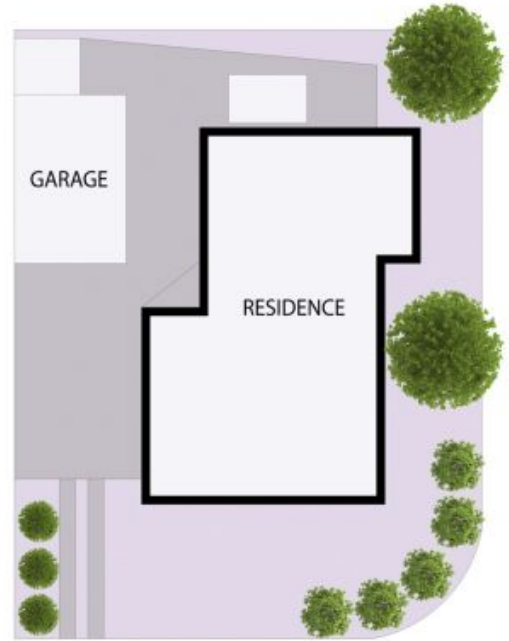
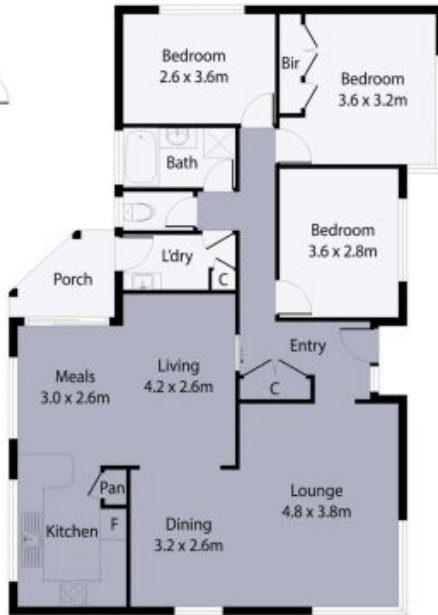
0402 177 336  
jim.k@lovere.com.au



**Ibby Zayat**

0412 469 545  
ibby.z@lovere.com.au

# 15 Keith Avenue, Epping



THE ABOVE PLAN IS AN ARTIST'S IMPRESSION ONLY, IT INCLUDES ELEMENTS THAT ARE FOR DISPLAY PURPOSES ONLY AND MAY NOT BE TO SCALE. LANDSCAPING SHOWN IS INDICATIVE ONLY. DIMENSIONS ARE APPROXIMATE.

