



44 Edgecombe Way Roxburgh Park, VIC



Sure to Impress!

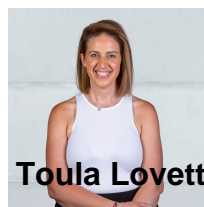
This lovely home is sure to impress, with features on hand such as;

- Open Plan Kitchen/Meals Area
- Separate Lounge
- Double Garage
- Master Bedroom with WIR and Ensuite
- Ducted Heating
- Cooling to Main Lounge Area

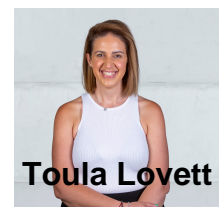
This home really is the complete package, don't let this opportunity pass you by.

LOVE & CO NUMBER 1 IN PROPERTY MANAGEMENT!

Price: \$500 Per Week



Toula Lovett



Toula Lovett

lovmillpark@mail.inspectrealest.com.au | lovmillpark@mail.inspectrealest.com.au