



17 Touhey Avenue Epping, VIC



Inviting, Spacious, and Bright

Nestled in a prime location, this property is the ideal home for first-time buyers or astute investors. Situated within walking distance of Epping Primary School and Lowalde Recreational Reserve, it's perfectly suited for families. A short drive away, you'll find the train station and the bustling Epping Plaza, ensuring that convenience is at your doorstep. Step inside, and you're welcomed by an open-plan lounge and meals area that offers a comfortable and inviting space for daily living. The central kitchen features ample cupboard space, making organization a breeze, while the central bathroom is conveniently located to serve all your needs. As you explore further, you'll find a spacious backyard with a pergola, perfect for outdoor entertainment. In addition, the garage has been thoughtfully converted into another living space, offering flexibility to suit your preferences.

Property Features:

? Open-plan living and dining area

Price: \$638,000



Jim Kalakias

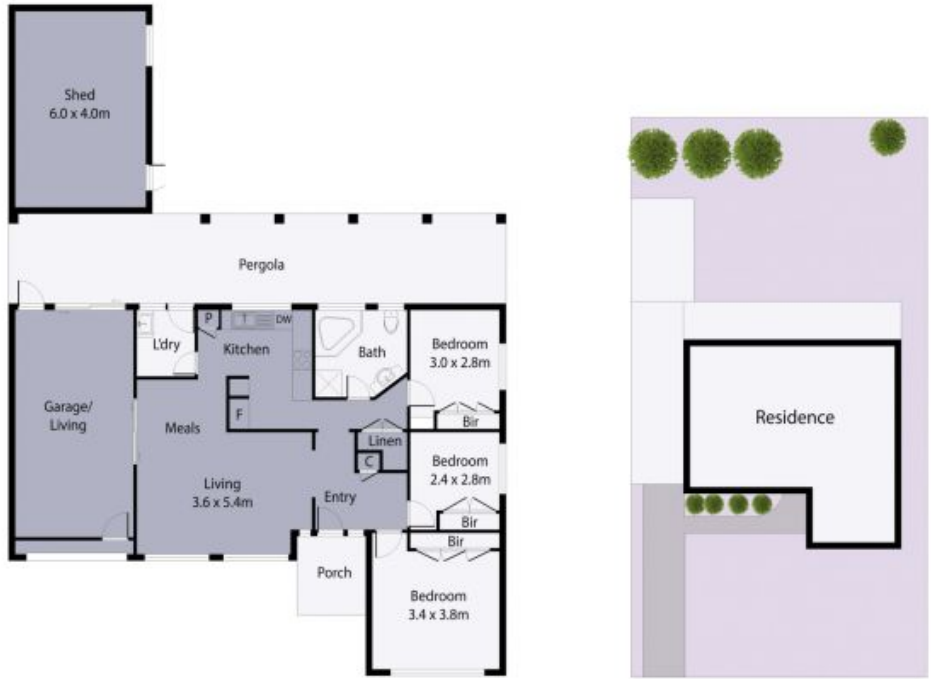
0402 177 336
jim.k@lovere.com.au



Ibby Zayat

0412 469 545
ibby.z@lovere.com.au

7 Touhey Avenue, Epping



THE ABOVE PLAN IS AN ARTIST'S IMPRESSION ONLY, IT INCLUDES ELEMENTS THAT ARE FOR DISPLAY PURPOSES ONLY AND MAY NOT BE TO SCALE. LANDSCAPING SHOWN IS INDICATIVE ONLY. DIMENSIONS ARE APPROXIMATE.

