



19/261 Edwardes Street Reservoir, VIC

**SET YOUR BUSINESS HERE, GOOD SIZE AND AFFORDABLE**

**3 car spaces on title**

A boutique development of 20 architecturally designed high clearance self-contained warehouses, providing flexible spaces that have been cleverly designed with emphasis on efficient use of space and light ensuring your business can optimise every square metre for productivity and functionality.

Unit 19 is situated towards the rear of the complex providing easy access, key features include:

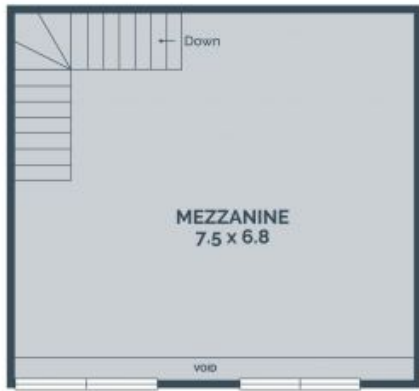
- \* Mezzanine floor area: 55 sqm
- \* Warehouse floor area: 99 sqm
- \* Total building area: 154 sqm

**Council Rates:** \$0.00  
**Water Rates:** \$0.00  
**Strata Rates:** \$0.00



**Branko Agatanovic**

0448 035 565  
 branko.a@lovere.com.au



Every precaution has been taken to establish accuracy of the information in this brochure but does not constitute any representation by the vendor or agent.

LOVE & CO

LOVE & CO

19/261 Edwardes Street

Reservoir, VIC