



2 Farmhouse Boulevard Epping, VIC



3



2



2

Luxury Living With Designer Appeal

Representing outstanding value in a premium pocket enjoy the benefits of St Mary of the Cross McKillop Primary School and Aurora Village only a short walk away, this three-bedroom plus study home easily delivers on every element of modern low-maintenance living in lifestyle surrounds. The generous main bedroom indulges with an ensuite and walk-in robe, while the remaining two are well served by the family bathroom. The large light filled casual living zone, stretching out from central kitchen, opens to paved yard in low maintenance gardens for relaxed easy indoor-outdoor living!

- Ducted heating and cooling
- Split system
- Clever blend of tiles and floating floors
- Double garage with auto door
- Kitchen with stainless steel appliances

Price:

Auction - Saturday 11th November at 12.30pm



Jim Kalakias

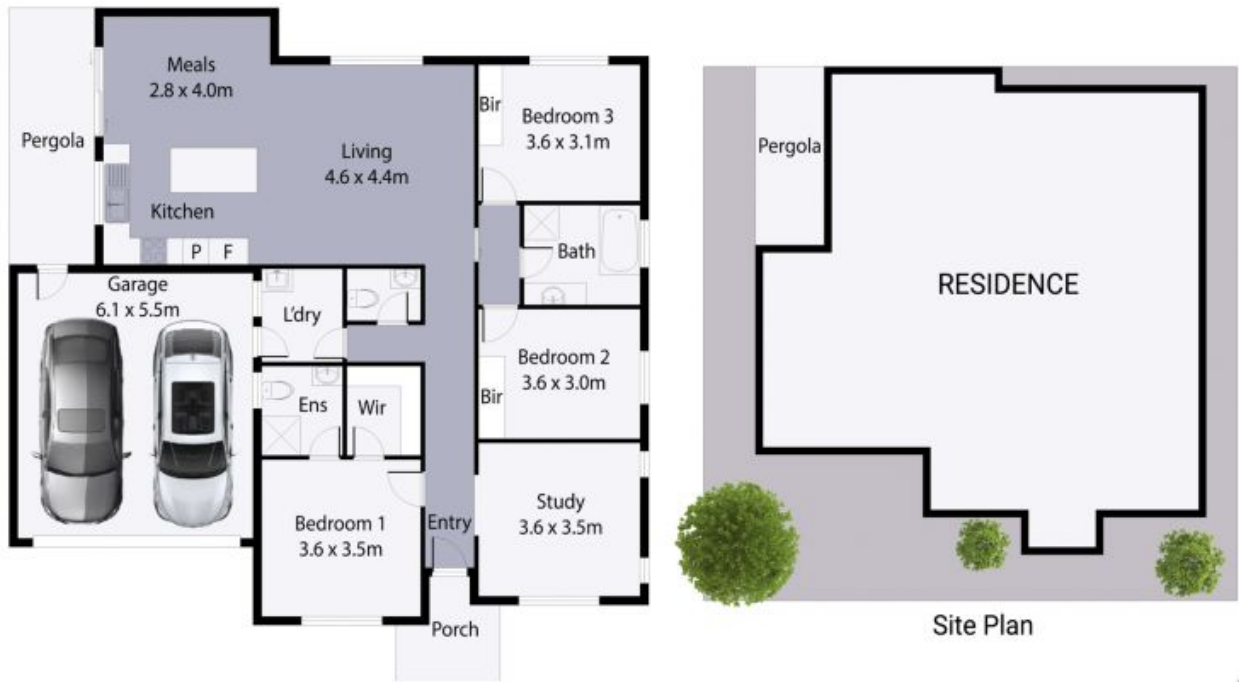
0402 177 336
jim.k@lovere.com.au



Ibby Zayat

0412 469 545
ibby.z@lovere.com.au

2 Farmhouse Boulevard, Epping



THE ABOVE PLAN IS AN ARTIST'S IMPRESSION ONLY, IT INCLUDES ELEMENTS THAT ARE FOR DISPLAY PURPOSES ONLY AND MAY NOT BE TO SCALE. LANDSCAPING SHOWN IS INDICATIVE ONLY. DIMENSIONS ARE APPROXIMATE.

