

Under Application

Love&Co Mill Park



13 Kestrel Road South Morang, VIC



PERFECT IN EVERYWAY !!!

This well presented family home delivers the whole package at an affordable rate that will have everyone smiling upon inspection.

Located in the popular Mill Park Lakes Estate and situated within minutes to local schools and childcare facilities, public transport, Westfield Shopping Centre, parklands, sporting facilities and so much more, this property is perfect for everyday living.

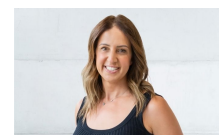
This home includes;

- 3 Bedrooms
- Ensuite
- Built In Robes
- Newly Laid Carpets
- Ducted Heating
- Evaporative Cooling

Price: \$500 Per Week



Toula Lovett



Toula Lovett

lovemillpark@mail.inspectrealestate.com.au | lovemillpark@mail.inspectrealestate.com.au