



115/30 Oleander Drive Mill Park, VIC



2



2



1

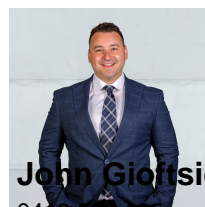
Moments From It All

This two-bedroom apartment really has it all - a light-filled layout and modern finishes all wrapped in a low-maintenance lifestyle. You will have everything this vibrant region has to offer at your fingertips while relishing an easy-care home with a leafy outlook.

The layout offers two bedrooms including a plush owner's suite with dual built-in robes and a private ensuite. The guest bedroom has a built-in robe and easy access to the main bathroom with a European-style laundry.

For the cook, the well-equipped kitchen will impress with stainless steel oven and gas cooktop, a dishwasher and ample storage. Meals can be enjoyed in the open-plan living space or you can step out to the balcony to drink in the view as you dine alfresco. A secure garage parking space with storage cage is also included whilst the building also offers secure entry to the foyer and lift access.

Price: 379000

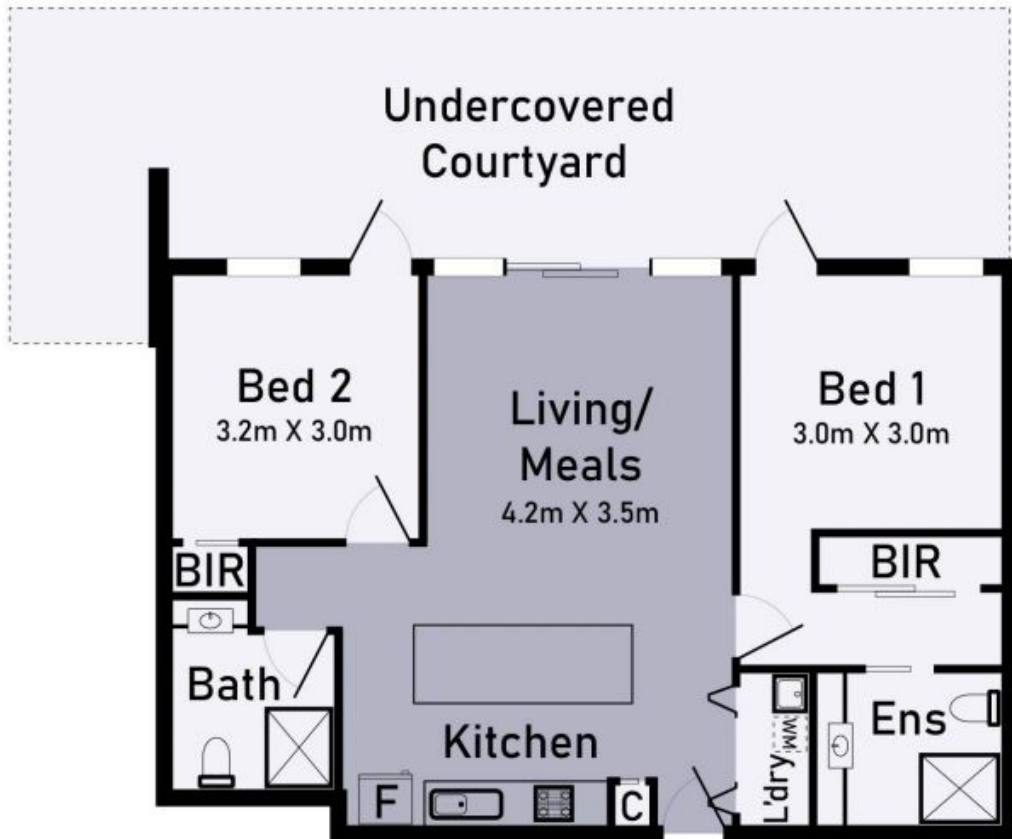


John Giotsidis

0416 522 135

john.g@lovere.com.au

LOVE & CO



115/30A Oleander Drive Mill Park

LOVE & CO

* Dimensions are approximate and for illustrative purposes only

115/30 Oleander Drive

Mill Park, VIC