



4 Parisel Circuit Mernda, VIC

3

2

2

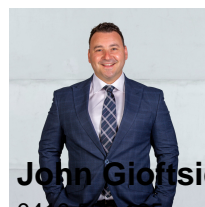
First-Class Living, Five-Star Convenience

Attention to detail and stylish design begins with the captivating facade of this contemporary three-bedroom home and extends throughout its fashionable single-level interior that's a celebration of modern living and a champion of quality.

A radiant open-plan living domain overseen by a gorgeous gourmet kitchen creates a communal living space that's relaxing to be in and beautiful to look at; the interior's seamless integration with the oversized north-facing undercover alfresco adds style and functionality while entertaining.

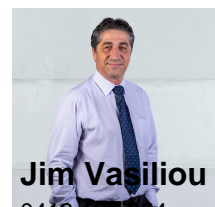
The successful grouping of the welcoming lounge on entry with the large master bedroom (with ensuite and walk-in robe) creates a private retreat for parents, while a further two robed bedrooms and central family bathroom are zoned for privacy.

Price: Sold \$730,000



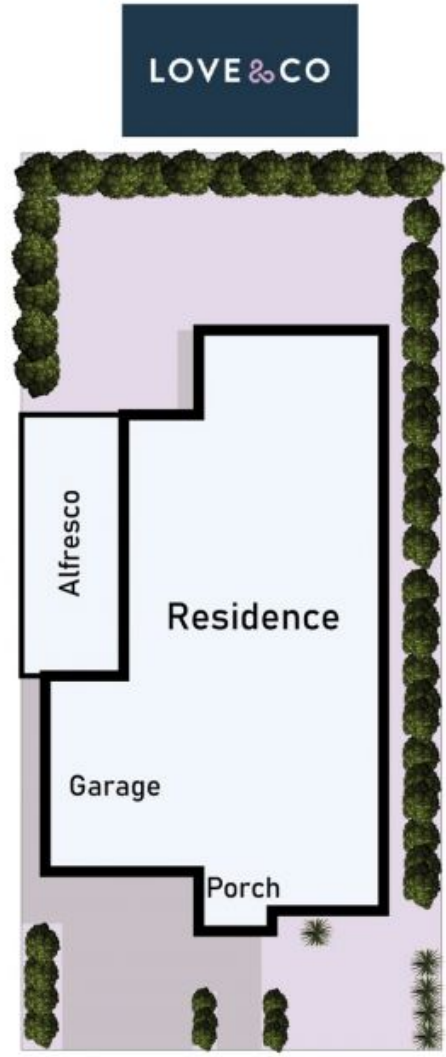
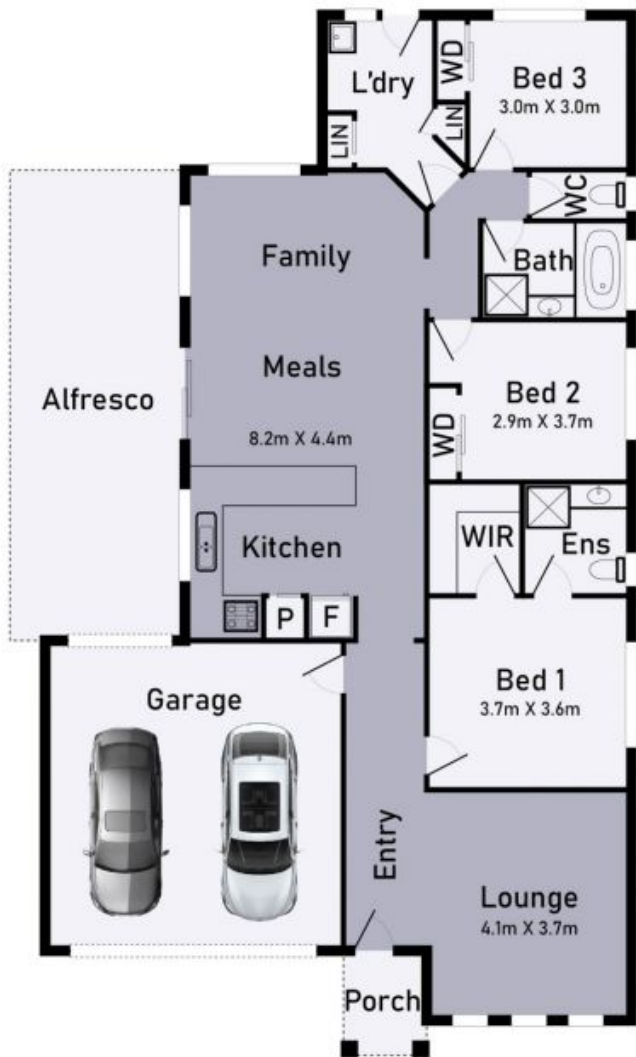
John Giotsidis

0416 522 195
john.g@lovere.com.au



Jim Vasiliou

0418 123 034
jim.v@lovere.com.au



4 Parisel Circuit Mernda

* Dimensions are approximate and for illustrative purposes only

