



101/251 Johnston Street Abbotsford, VIC

 2
  2
  1

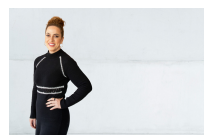
### Boutique Privileges Including Private Garage

\*Expression of Interest - Offers close Tuesday, 22nd August at 5pm\*

**Price:** SOLD - \$720,000

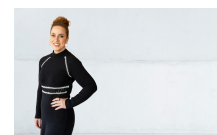
Designed to deliver a lifestyle of utmost convenience and class, this upmarket two bedroom, two bathroom apartment featuring a private garage is a unique opportunity in the landmark Pace of Abbotsford building. Where residents enjoy exclusive access to rooftop leisure zones highlighted by breathtaking views, an infinity pool, gym, library and barbeque areas for relaxing and entertaining. Moments from public transport, cafes and Woolworths Metro, and only minutes to Yarra River parklands, Abbotsford Convent and the CBD amplifies its appeal.

- \* Sophisticated open style living, dining, alfresco balcony
- \* Miele kitchen, fully integrated fridge/freezer, dishwasher
- \* Master bedroom, study alcove, ensuite with stone vanity
- \* Second bedroom, BIRs, separate bathroom, European laundry



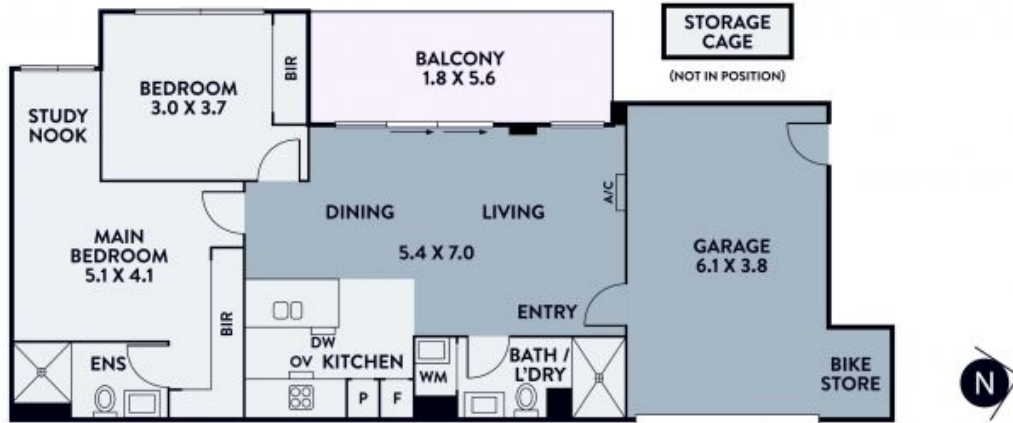
**Niki Castro**

0414 334 900  
niki.c@lovere.com.au



**Niki Castro**

0414 334 900  
niki.c@lovere.com.au



Every precaution has been taken to establish accuracy of the information in this brochure but does not constitute any representation by the vendor or agent.