



5/50 Wedge Street Epping, VIC



## Warm, Welcoming And Lifestyle Ready

Offering the perfect mix of easy living, generous space and a prized address that has you within a stress-free stroll of just about every Epping amenity, this single-level home presents a tempting proposition to first home buyers, re-sizers and those looking to take advantage of the booming rental market. Set in a boutique block, the generously proportioned interior introduces two bedrooms served by the family bathroom, complementing them with a spacious lounge flowing freely through to a kitchen meals. A paved and covered outdoor area anchors an expansive rear yard with room for the kids and their pets to enjoy. Brilliantly positioned for walk-everywhere living, it is literally footsteps to High Street's cafes, restaurants, takeaways, and boutiques. Epping Plaza for shopping, a meal and a movie is a short walk away, and so is the station and a choice of schools!

? Single-car garage (auto door)

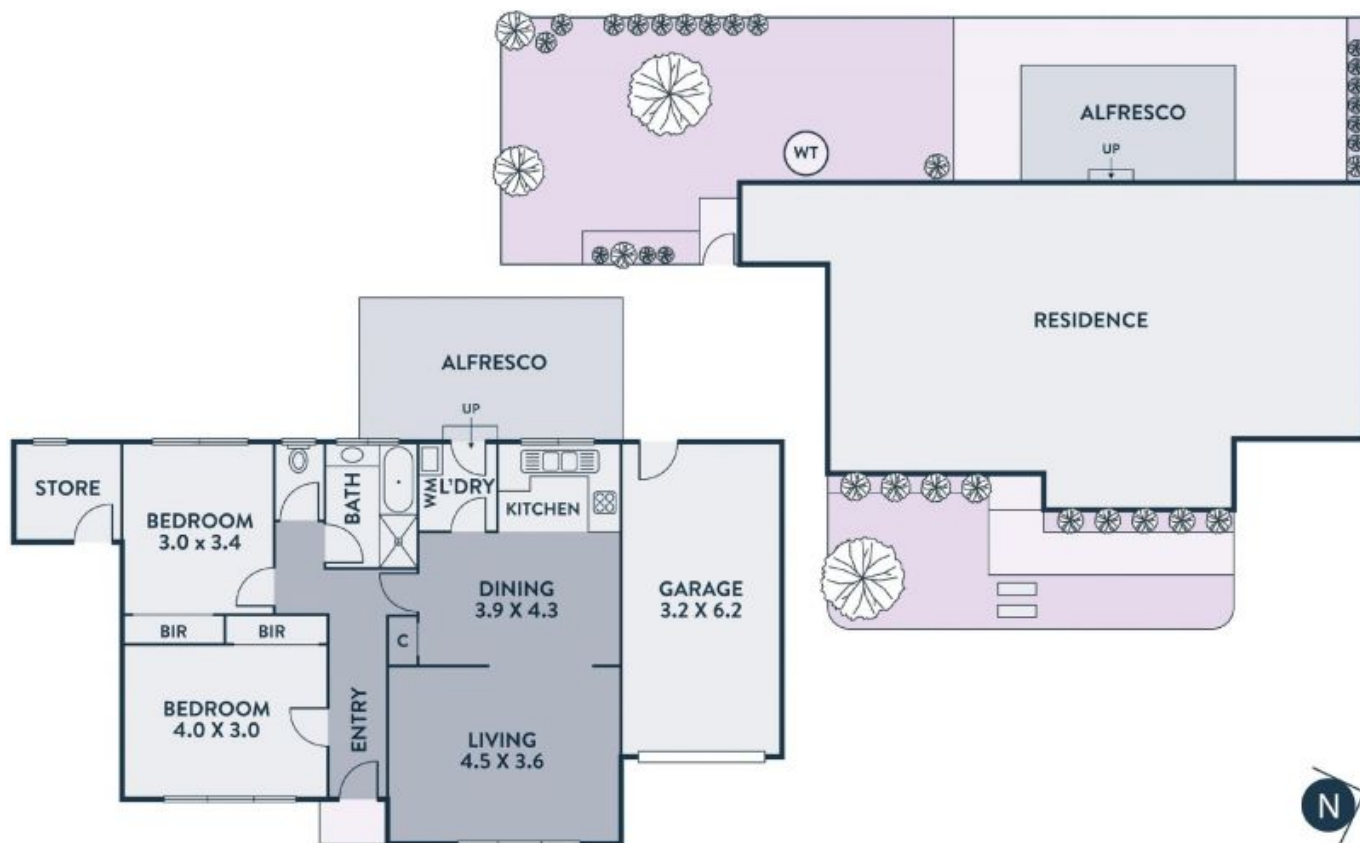
**Price:** \$500,000



**Jim Kalakias**

0402 177 336

jim.k@lovere.com.au



Every precaution has been taken to establish accuracy of the information in this brochure but does not constitute any representation by the vendor or agent.

**LOVE & CO**

**5/50 Wedge Street**

**Epping, VIC**