



1 Viola Court Mill Park, VIC

3 2 1

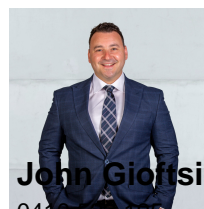
### Instant Appeal, Enduring Comfort

Enjoying the serenity of a peaceful court location with the benefits of pristine presentation and a spacious three-bedroom floorplan on a manicured 576sqm (approx.) block, seize upon this outstanding opportunity to raise your young family in one of Mill Park's best neighbourhoods with the added luxury of space.

Attractive from the kerbside, awash with natural light and dressed with updated floating timber flooring throughout the two light-filled areas and large contemporary kitchen, this instantly appealing home also represents a smart investment or downsizing option for empty nesters still requiring an element of space for the grandkids.

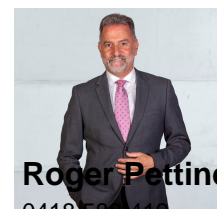
Forgetting about the daily grind is made easy when you choose to unwind in the sun-kissed lounge on entry, which frames a calming front garden aspect through its large Bay window and extends onto the huge undercover alfresco for relaxed indoor-outdoor lifestyle enjoyment. Indoor-outdoor living is also a design feature embraced by the radiant open-plan living in the heart of this impressive home.

**Price:** Sold \$862,500



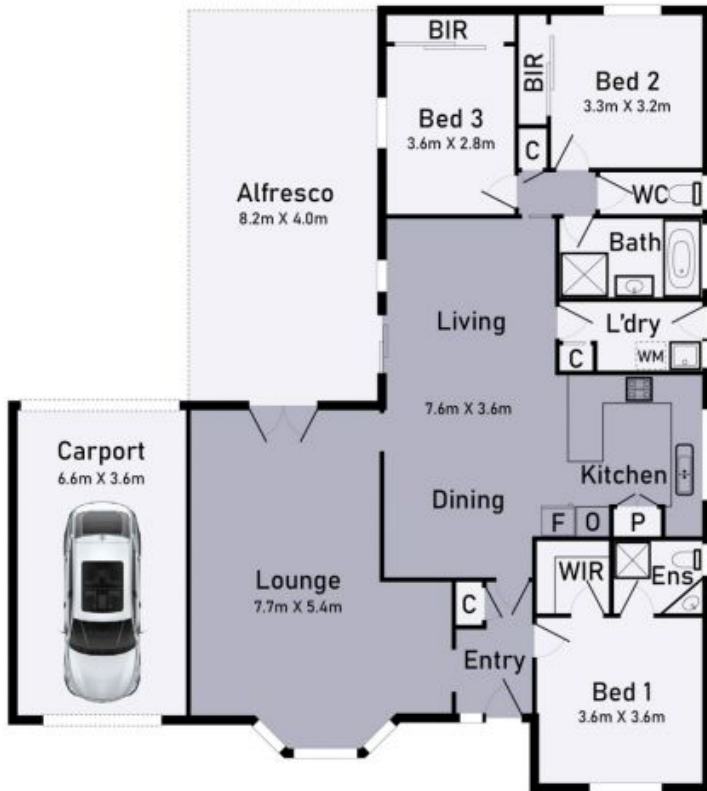
**John Giotsidis**

0410 522 135  
john.g@lovere.com.au



**Roger Pettinella**

0418 588 419  
roger.p@lovere.com.au



# 1 Viola Court Mill Park

\* Dimensions are approximate and for illustrative purposes only

