



21 Runecrest Terrace Epping, VIC



4



2



4

LIFESTYLE MEETS LOCATION IN LYNDARUM

How's the serenity ???.

It's all about the location and the enviable lifestyle that awaits with this stunning BV family home, superbly located in the exclusive LYNDARUM ESTATE. Perfectly positioned opposite picturesque nature reserves and enjoying tranquil surrounds, just minutes to AURORA Village, LYNDARUM Town Centre, Pacific Plaza Epping, schools, public transport, Health Services and easy access to M31 Hume Freeway via O'Hearns Road.

From the moment you step inside this beautiful family home, you will appreciate the obvious level of quality, style and sophistication that extends through every aspect. Offering comfort and space with plenty of room for the growing family, this fabulous home comprises 4 large bedrooms with built in robes, master bedroom with walk in robe and sumptuous ensuite, deluxe family bathroom with bathtub and well appointed laundry with stone bench tops.

Price:

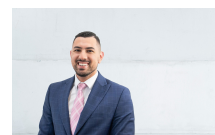
Auction Saturday 22nd July at 2:30pm



Ryan Di Natale

0418 330 587

ryan.d@lovere.com.au

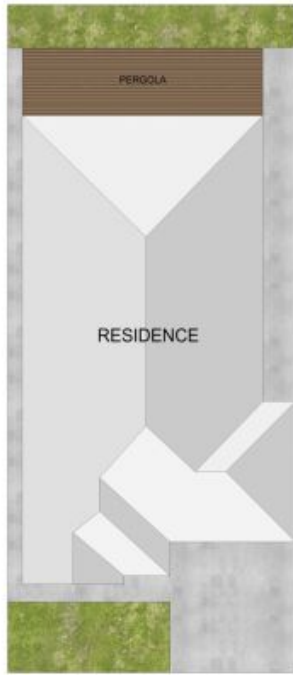


Jude Kattan

0450 848 255

jude.k@lovere.com.au

21 Runecrest Terrace, Epping



THE ABOVE PLAN IS AN ARTIST'S IMPRESSION ONLY, IT INCLUDES ELEMENTS THAT ARE FOR DISPLAY PURPOSES ONLY AND MAY NOT BE TO SCALE. LANDSCAPING SHOWN IS INDICATIVE ONLY. DIMENSIONS ARE APPROXIMATE.

