



4/22 High Street Windsor, VIC



LOCATION LOCATION LOCATION!!!

Take up this rare opportunity to lease a cool retro apartment in prime position! Featuring:

- * Large bedroom!!
- * Separate kitchen
- * Bathtub & laundry facilities
- * Ample storage including built in robes and linen closet
- * Light filled living
- * Double brick keeping you warm in winter and cool in summer
- * 8 apartments to choose from!

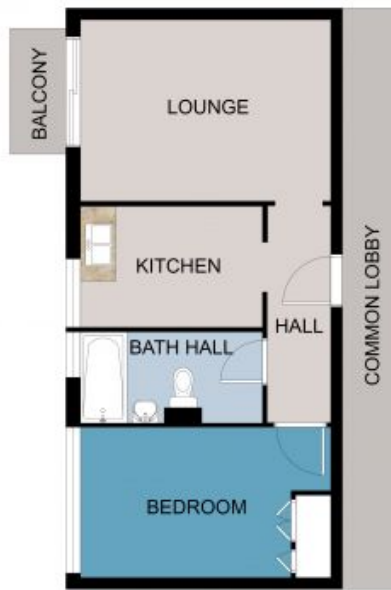
Don't miss this unique opportunity to make your mark in this prime lifestyle location, brilliantly located for a vibrant convenient lifestyle close to fashionable Chapel Street shops, cafes & restaurants, Punt & St Kilda Roads, Greville & Fitzroy Streets, Wesley College & Swinburne University, The Alfred Hospital and a choice of transport options!

Price: \$390 per week



Louise Mitchell

loverealestate@mail.inspectreale



FLOOR PLAN

This floor plan including furniture, fixture measurements and dimensions are approximate and for illustrative purposes only. BoxBrownie.com gives no guarantee, warranty or representation as to the accuracy and layout. All enquiries must be directed to the agent, vendor or party representing this floor plan.

22 High Street