



14 Birrali Way South Morang, VIC



4



2



3

LOCATION MEETS LIFESTYLE

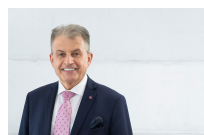
With striking street appeal and cleverly designed for modern day living, this beautiful BV family home utilises space, natural light and and great structural design, establishing a fantastic home for families with enormous lifestyle appeal in the prestigious WATERSTONE HILL ESTATE.

Perfectly positioned opposite picturesque nature reserves and enjoying tranquil surrounds, waterfront walking tracks, recreational play areas for families and the kids to feed the ducks, bbq facilities, spectacular views to Quarry Hill, only minutes to Coles Supermarket, cafes, bus stop just around the corner, an excellent choice of primary and secondary schools, Westfield Shopping Dining/ Entertainment Precinct, South Morang train station and essential amenities.

Showcasing style and sophistication, downstairs introduces a grand entrance with stylish spaces enhanced by a superb open living floor plan, formal lounge room, meals/ dining/ living area wrapping around a sleek stainless steel equipped kitchen, 4th bedroom or study, guest powder room and separate laundry.

Price:

SOLD \$757,000

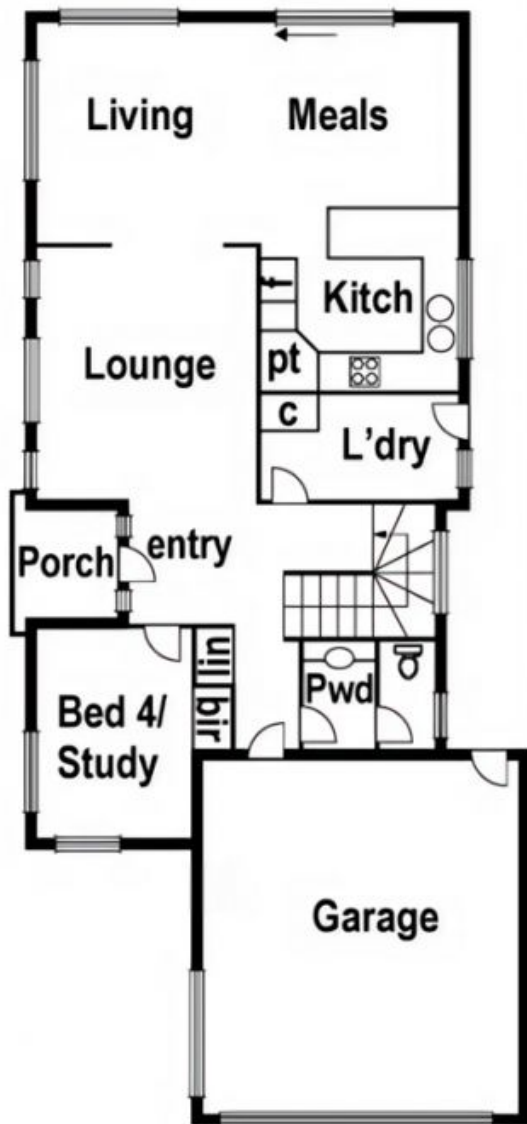


Ilia Menkinoski

0417 528 100

ilia.m@lovere.com.au

14 Birrali Way, South Morang



LOVE & CO