



8 Clarence Way Taylors Hill, VIC

4

2

2

Ticking all the right boxes.

With its versatile floor plan this sensational home is offering both lifestyle and quality living.

Comprising:

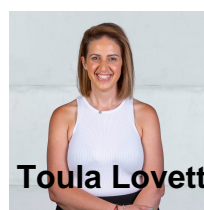
4 spacious bedrooms, master bedrooms with WIR and full ensuite, other 3 bedrooms with BIR.

Theatre room.

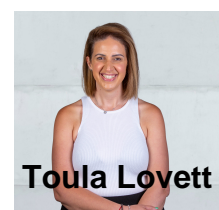
Formal entry leading to beautifully appointed state of the art modern kitchen equipped with quality appliances, stone bench tops and plenty of cupboards space overlooking meals and family area. Another separate living space/kids retreat area. Other features include 2 car remote controlled garage, ducted heating and split system in main living.

Situated in much sought after pockets of Taylors Hill and within close proximity to various shopping centers, local schools, public transport and park lands.

Price: \$610 Per Week



Toula Lovett



Toula Lovett

lovmillpark@mail.inspectrealest.com.au