



35 Applegum Drive South Morang, VIC

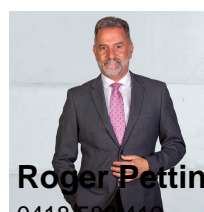
 1
  1
  2

A 1 Bedroom masterpiece on 480m2 ?

A celebration of light filled family sized proportions, this luxurious 1 Bedroom cottage is architecturally bold and meticulously crafted with 1st class appointments throughout?

Stunning contemporary living via the eye-catching formal entry, a stately Master bedroom with luxury ensuite and huge WIR, an elegant family sized step-down lounge room with bonus sun-room. The superb "custom-built" gourmet kitchen is complimented by dual ovens, integrated dishwasher, timber look bench tops and walk-in butler's pantry with an adjoining sun-filled dining area that boasts a stunning outlook to majestic gardens and the extensive outdoor timber decked verandah, suited to year-round alfresco enjoyment.

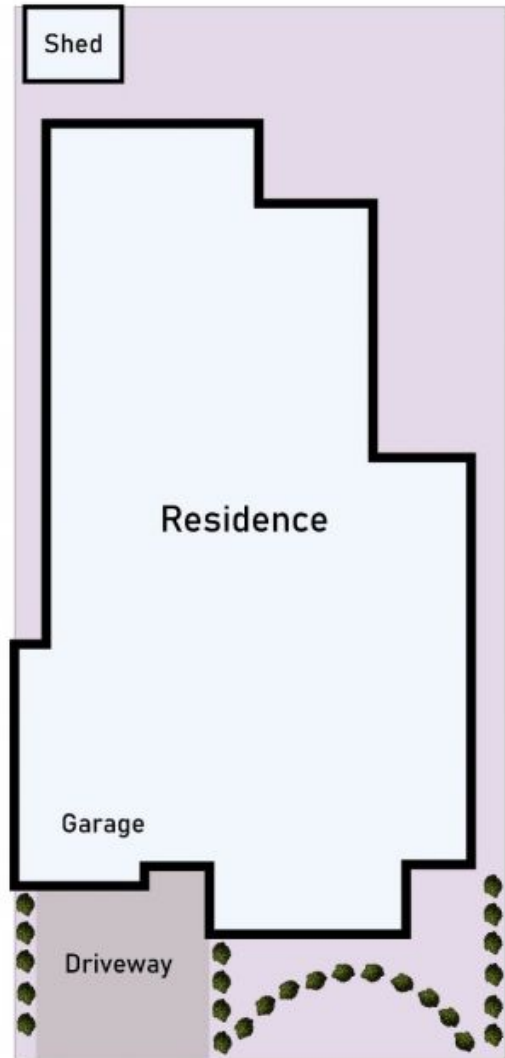
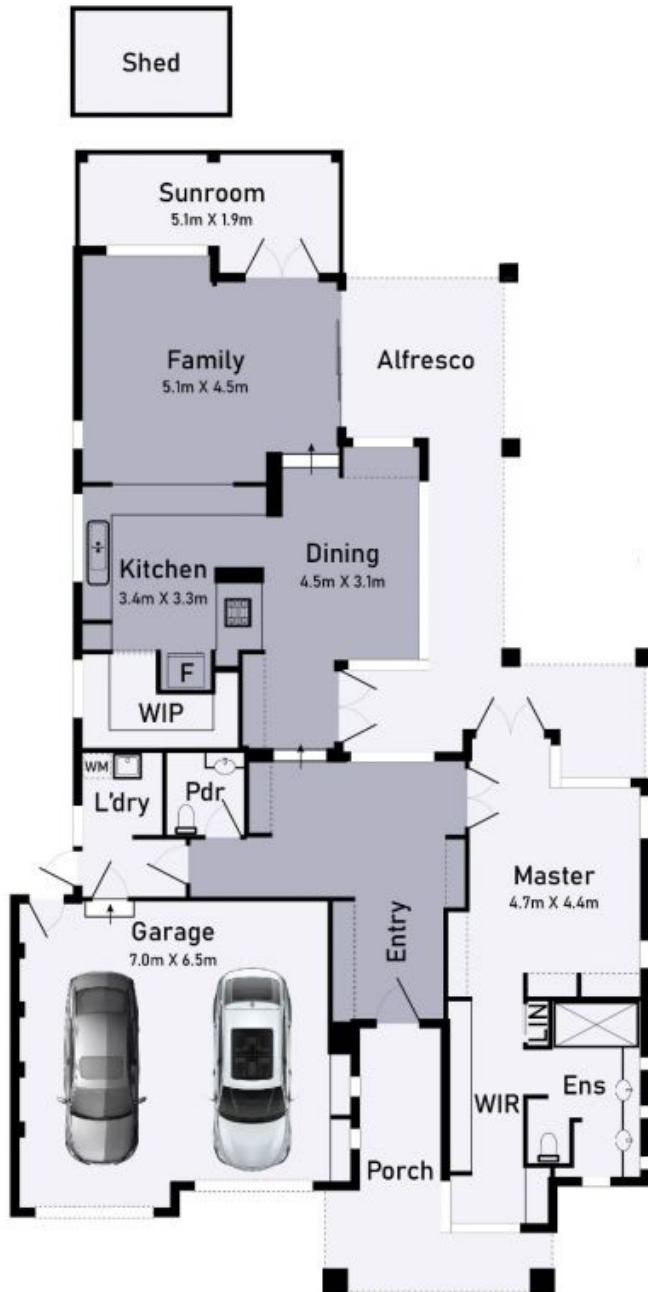
Price: Sold \$724,500



Roger Pettinella
0418 588 419
roger.p@lovere.com.au



Jim Vasiliou
0418 123 034
jim.v@lovere.com.au



35 Applegum Drive South Morang

TOTAL AREA : 24.5 SQ 228.0 m²

* Dimensions are approximate and for illustrative purposes only



35 Applegum Drive

South Morang, VIC