



2/148 Arthurton Road Northcote, VIC

OFFICE/WAREHOUSE IN SOUGHT AFTER LOCATION

185SQM (approx.) self-contained warehouse and office, superbly positioned only 6.5 kms (Approx.) from the heart of the Melbourne CBD, with easy access to High Street, Nicholson Street and St Georges Road,

- Zoned Commercial 1
- Ground floor with reception, two separate offices plus third office or storeroom
- Container height electric roller door
- Upstairs with office area, showroom/boardroom, additional kitchen/lunchroom, bathroom with shower
- Split system heating and cooling to office areas
- Front and rear security gate access
- Network data cabling and TV cabling
- Allocated parking

Council Rates: \$0.00 p/q

Water Rates: \$0.00 p/q

Strata Rates: \$0.00 p/q

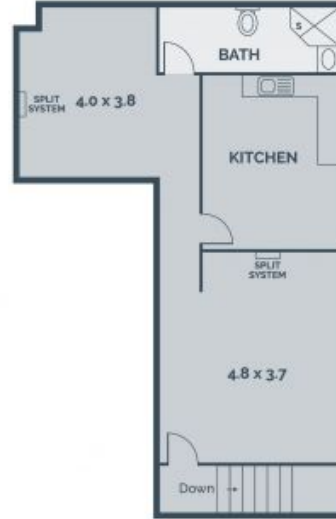
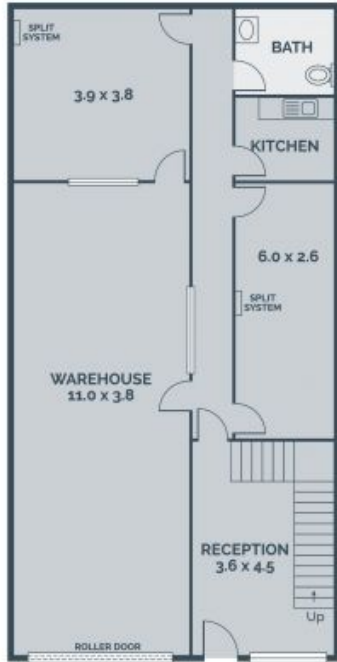


Graham Love

0418 534 450

graham.l@lovere.com.au

CAR SPACE
NOT IN
POSITION



Every precaution has been taken to establish accuracy of the information in this brochure but does not constitute any representation by the vendor or agent.

LOVE & CO

LOVE & CO

2/148 Arthurton Road

Northcote, VIC