

20 Mediterranean Way Epping, VIC



4



2



2

Luxurious Contemporary Family Living

Set in the prestigious Lyndarum Estate, footsteps from Fendi Park, a short walk to the bus, primary school and all the offerings of the nearby shopping centre and minutes to the Ring Road, Epping Plaza and station, this captivating home delivers luxurious contemporary family living!

Engineered timber floors greet you at an entry introducing a thoughtfully designed interior offering a large lounge anchored by a Heat'n'Glo gas log fire, complementing it with a spacious open-plan living area. Stretching out from a kitchen featuring stainless steel appliances and stone benches (waterfall to the large island, it makes a seamless extension to a decked entertainment area fitted with seating and introducing roller blinds for all-weather enjoyment.

The main bedroom, complete with a bespoke fitted walk-in robe and deluxe dual basin ensuite, enjoys the peace and privacy of a setting at the front of the house, with the remaining three bedrooms and the family bathroom tucked away in their own wing at the rear.

Price: \$880,000

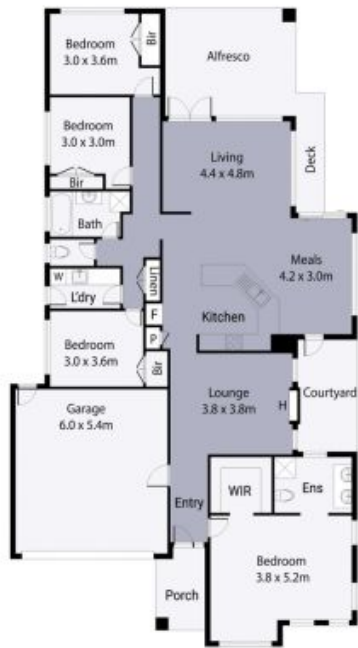


Jim Kalakias

0402 177 336

jim.k@lovere.com.au

20 Mediterranean Way, Epping



THE ABOVE PLAN IS AN ARTIST'S IMPRESSION ONLY, IT INCLUDES ELEMENTS THAT ARE FOR DISPLAY PURPOSES ONLY AND MAY NOT BE TO SCALE. LANDSCAPING SHOWN IS INDICATIVE ONLY. DIMENSIONS ARE APPROXIMATE.

