



1/20 Ashley Street Reservoir, VIC



Easy Living In A Lifestyle Location

Complementing sought-after street frontage, a fenced front yard filled with easy care privacy plantings, the accessibility of its own driveway to the single car garage and the appeal with a lifestyle location that is second to none!

A short walk into the heart of Reservoir and its many dining, latte and shopping options, professional services, supermarkets, and station, it delivers space, comfort, class and convenience.

Surprisingly spacious, the easy-to-live-with layout introduces a large lounge that partners with generous open-plan living. Flooded with northern sunlight and anchored by a stone-finished kitchen complete with quality appliances, including a double-drawer dishwasher, it steps out to a north-facing deck. Bordered by established plants and enhanced by a pair of awnings that allow you to decide on how much sun or shade you enjoy, it's a haven for relaxed outdoor entertaining.

Price: SOLD - \$896,000



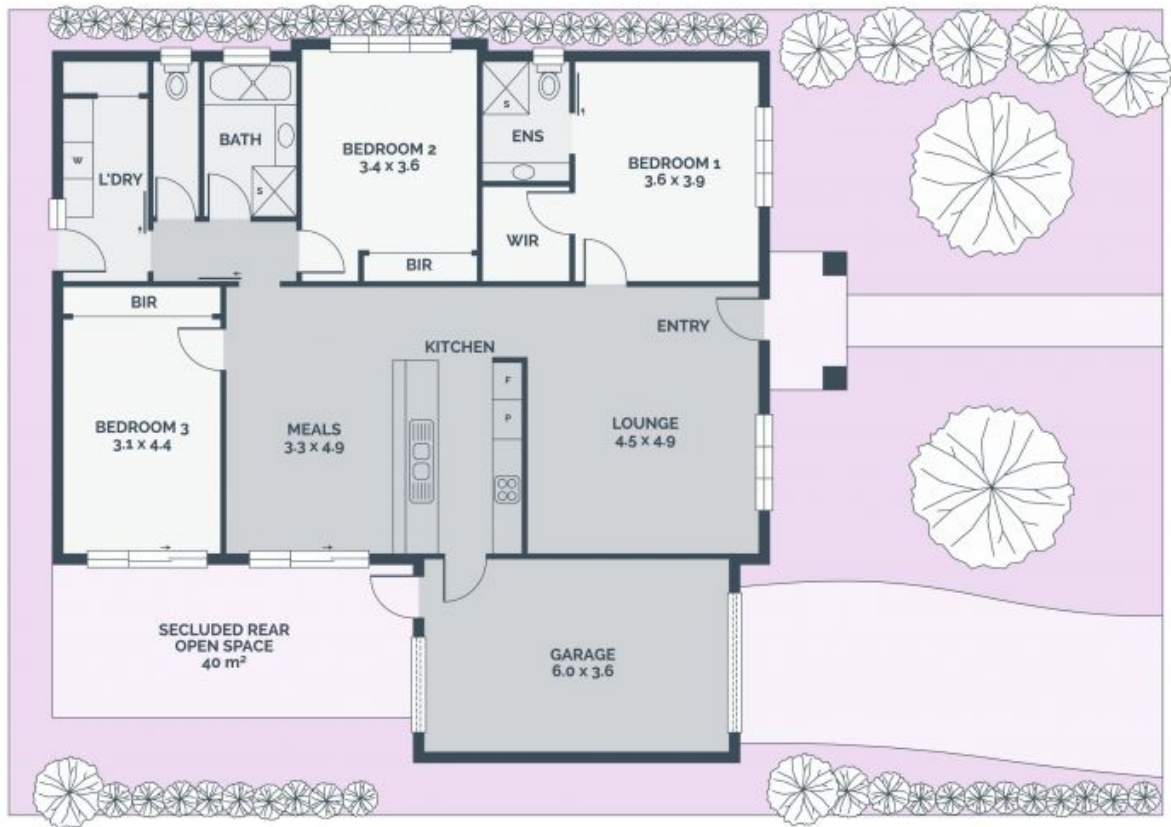
Shane Yaman

0417 557 972
shane.y@lovere.com.au



Javit Denizhan

0422 055 928
javit.d@lovere.com.au



Every precaution has been taken to establish accuracy of the information in this brochure but does not constitute any representation by the vendor or agent.



1/20 Ashley Street

Reservoir, VIC