



23 Mount View Road Thomastown, VIC



### Walk To Everything!

Enjoying a five-star location walking distance to the areas most sought-after amenities including the Thomastown Recreation and Aquatic Centre, High Street shopping/dining, schools and parklands, this spacious mid century brick veneer home presents a host of enticing options. The property is prime for a multi-unit redevelopment. Alternatively, its spacious and bright floorplan offers a fantastic foundation for a renovation project, or could instantly present as a comfortable family home.

- \* Family accomodation include three spacious bedrooms each with robes and serviced by a family bathroom.
- \* The grand living room is framed by a large window to draw in lots of natural light and is enhanced by an original brick fireplace.
- \* Sliding timber doors access a wonderful timber kitchen and meals zone, equipped with plentiful storage and robust appliances.
- \* Adjoining is a potential fourth bedroom or home office along side a large laundry and separate powder room.

**Price:** SOLD

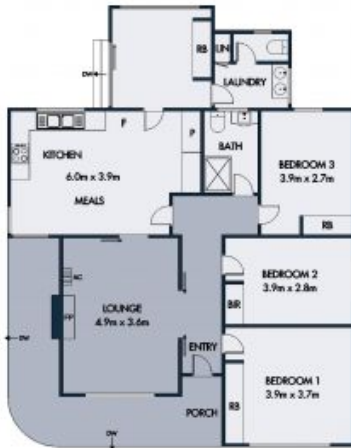


**Jess Ross**  
0467 083 804  
jess.r@lovere.com.au

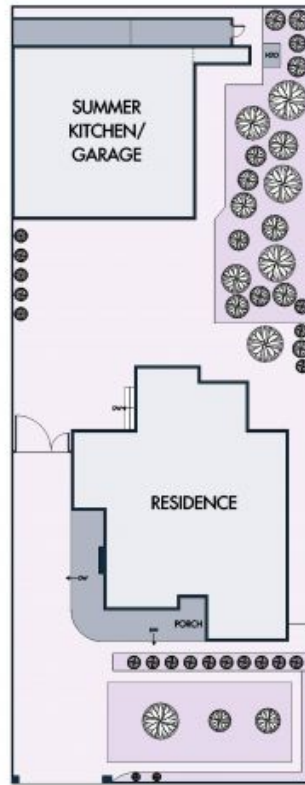
**Javit Denizhan**  
0422 055 928  
javit.d@lovere.com.au



(NOT IN POSITION)



FLOOR PLAN



SITE PLAN

Everycare has been taken to ensure the accuracy of the floor plan provided here. Measurements are approximate and are scaled in metres. We cannot guarantee its accuracy. Interested persons should satisfy themselves of any pertinent matters.

