



1/34 Nathan Drive Campbellfield, VIC

## CAFE ON PROMINENT CORNER

Located in an established industrial estate and perfectly positioned with great exposure, this Caf?/Take Away shop is waiting for you to give it your personal touch.

- 125m2 (approx.)
- 4 car spaces
- Zoned industrial 1
- 3 phase power
- Split System Air Conditioning
- Toilet

**Council Rates:** \$0.00 p/q

**Water Rates:** \$0.00 p/q

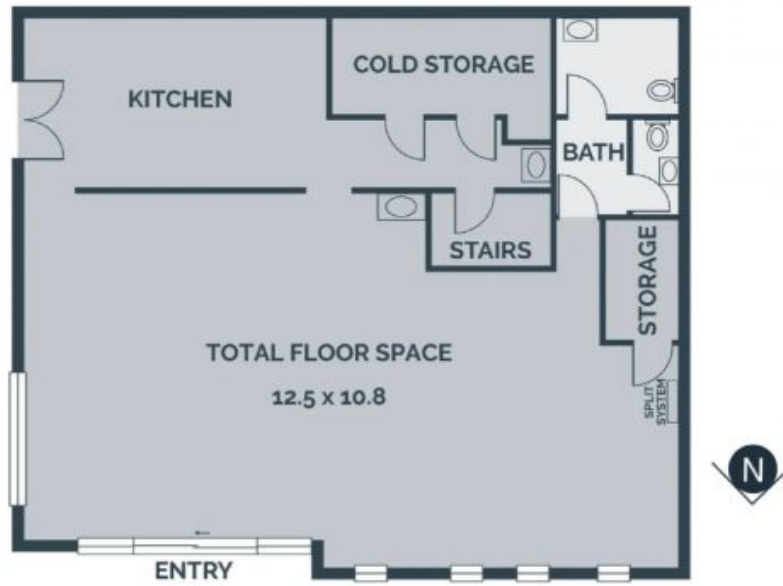
**Strata Rates:** \$0.00 p/q



**Branko Agatanovic**

0448 035 565

branko.a@lovere.com.au



Every precaution has been taken to establish accuracy of the information in this brochure but does not constitute any representation by the vendor or agent.