



2/11 Bradley Drive Mill Park, VIC



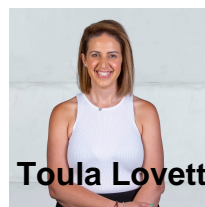
**Immaculately Presented Unit!**

This immaculately presented and meticulously maintained unit is sure to impress. Situated in a very convenient position in Mill Park with all essential amenities nearby, this property offers a fantastic opportunity for a young family or someone looking to downsize.

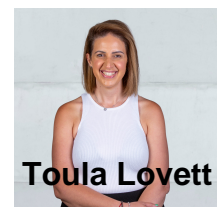
**Price:** \$400 Per Week

**Featuring:**

- 2 Bedrooms (large master with walk in robe)
- Kitchen/Meals area
- Large seperate lounge room
- Central bathroom
- Single remote garage
- Split system heating and cooling
- Low maintenace gardens
- Large expansive driveway for up to 4 cars



**Toula Lovett**



**Toula Lovett**

lovemillpark@mail.inspectrealest.com.au    lovemillpark@mail.inspectrealest.com.au