



4/216 Station Street Thomastown, VIC

## LARGE AFFORDABLE OPEN PLAN OFFICE SPACE

- 80 SQM (approx) first floor office space
- Open plan
- Good amenities including staff kitchen and toilet
- Heating and cooling
- Excellent street exposure
- Available now

**Council Rates:** \$0.00 p/q  
**Water Rates:** \$0.00 p/q  
**Strata Rates:** \$0.00 p/q

Rental \$16,00 PA - \$1333.33 PCM - \$307.69 PW Inclusive of outgoings  
 (Plus GST)

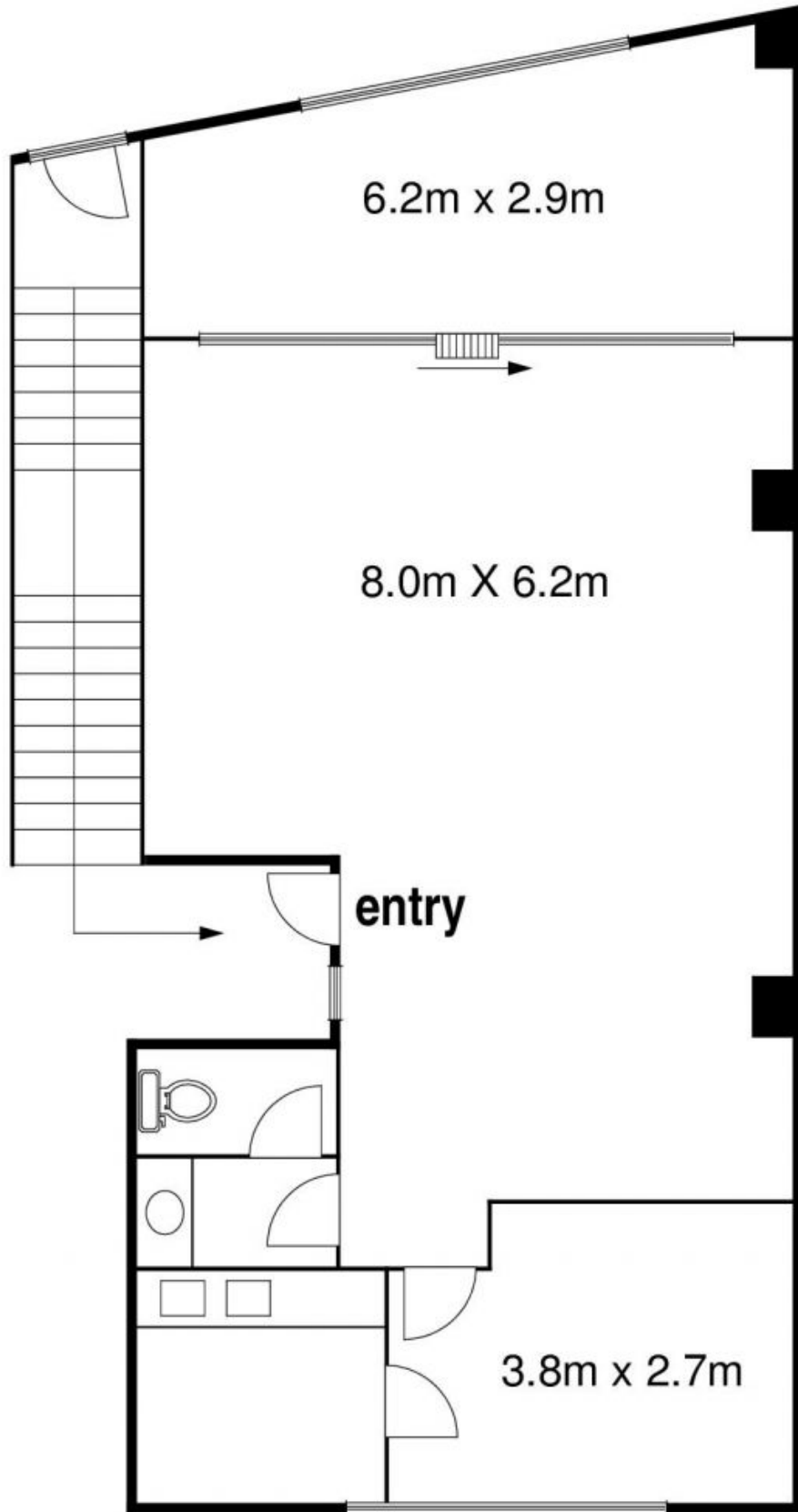


**Branko Agatanovic Lucy McMahon**

0448 035 565

branko.a@lovere.com.au

lucy.m@lovere.com.au



The information contained herein has been obtained through sources deemed to be reliable but cannot be guaranteed as to its accuracy. Any information of special interest should be obtained through independent verification.

**4/216 Station Street Thomastown, VIC**