



404/251 Johnston Street Abbotsford, VIC

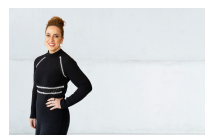
1 1

Boutique Style, Unbeatable Location

Place yourself in the heart of the action with this light lavish one bedroom apartment situated in the boutique Pace of Abbotsford building offering resort-style residents' amenities. In particular, rooftop heated pool and barbeque terrace with breathtaking city views (level 11), gymnasium, library, bicycle storage area and large residents' garden/entertainment zone (level 5). While an endless assortment of caf?s and restaurants, Woolworths Metro, Victoria Park station, Victoria Park, Yarra River trails, Dight Falls and Abbotsford Convent are at your fingertips.

- ? North facing living/dining opens to a large private balcony
- ? Sensational views of local city landmarks, mountain ranges
- ? Miele kitchen hosts integrated refrigerator and dishwasher
- ? Spacious bedroom, large BIRs, rainfall shower bathroom
- ? Split-system air conditioner and engineered timber floors
- ? Double-glazing, flyscreens, storage cage, intercom, lift

Price: SOLD



Niki Castro
0414 334 900
niki.c@lovere.com.au



George Theocharis
0415 578 809
george.t@lovere.com.au

**STORAGE
CAGE**
(NOT IN POSITION)



Every precaution has been taken to establish accuracy of the information in this brochure but does not constitute any representation by the vendor or agent.

404/251 Johnston Street

Abbotsford, VIC

LOVE & CO