



In Conjunction (MPS)
Melbourne Property Solutions
Buyer & Vendor Advocate Services
www.mpsadvocates.com.au

Mark Thompson
Ph: 0409 958 720
mark@mpsadvocates.com.au
[instagram.com/markthompson2416](https://www.instagram.com/markthompson2416)



126 Murray Road Preston, VIC



Positioned in Prime Preston Location

Nestled on a remarkable block of approx. 648m², this period home provides an unbeatable location ideal for the astute investor or young families alike. Bay windows bathe the living room in natural light, with adjoining formal dining or potential 3rd bedroom, as a large sunroom makes a superb backdrop for hosting. Enjoying the home's large allotment, the sunny backyard offers a paved entertainer's terrace. In an unmatched location close to Preston's High Street, trains, trams and walking trails, this home ticks all the boxes.

Nestled on a remarkable block of approx. 648m², this two-bedroom period home provides an unbeatable location ideal for the astute investor or young families alike. Bay windows bathe the living room in natural light, with adjoining formal dining or potential 3rd bedroom, as a large sunroom makes a superb backdrop for hosting. Enjoying the home's large allotment, the sunny backyard offers a paved entertainer's terrace. In an unmatched location close to Preston's High Street, trains, trams and walking trails, this home ticks all the boxes.

Price: SOLD - \$890,000



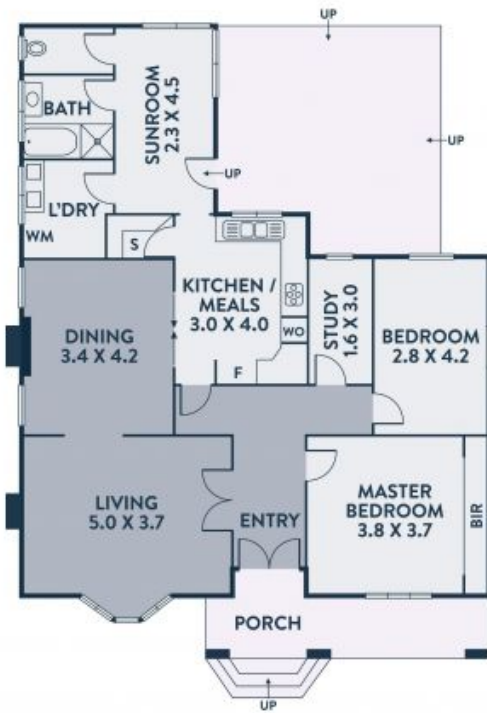
George Theocharis

0412 578 809
george.t@lovere.com.au



Noel Crouch

0412 207 117
noel.c@lovere.com.au



Every precaution has been taken to establish accuracy of the information in this brochure but does not constitute any representation by the vendor or agent.