



61 Holly Drive Wallan, VIC



Family Home!

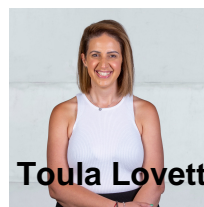
This home is perfect for the whole family, located just a quick drive to central Wallan and situated in one of the fastest growing suburbs in Melbourne's north.

The vibrant and upcoming town of Wallan is just a moment away with great shops, major retailers, and contemporary caf?s. Conveniently located close to local schools, sporting facilities and amazing amenities.

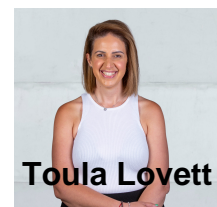
Comprising:

- 4 Bedroom with BIR
- 2 bathrooms
- Low maintenance gardens
- Open plan living and dining
- Separate lounge
- Stainless steel appliances and dishwasher

Price: \$525 Per Week



Toula Lovett



Toula Lovett

lovemillpark@mail.inspectrealest.com.au | lovemillpark@mail.inspectrealest.com.au