



52 Northumberland Drive Epping, VIC



3



1



5

## Fabulous Start, Intelligent Investment

Contemporary style on the inside, a kid and pet friendly garden complete and a location central to everything you could possibly need. Whether you are looking to nest or invest, this is a fabulous opportunity! Three bedrooms served by a sleek updated bathroom complement a spacious light filled living. Enhanced by hardwood timber floors, it sweeps around to a meals area overlooked by stainless steel equipped kitchen it makes the seamless transition to the backyard for year round enjoyment. An easy walk to Greenbrook Village and the bus, there are schools and parks all around, Westfield and South Morang station are minutes away in one direction and Epping's Plaza and station in the other. What are you waiting for!

- ? Ducted heating
- ? Evaporative cooling
- ? LED lights

**Price:**

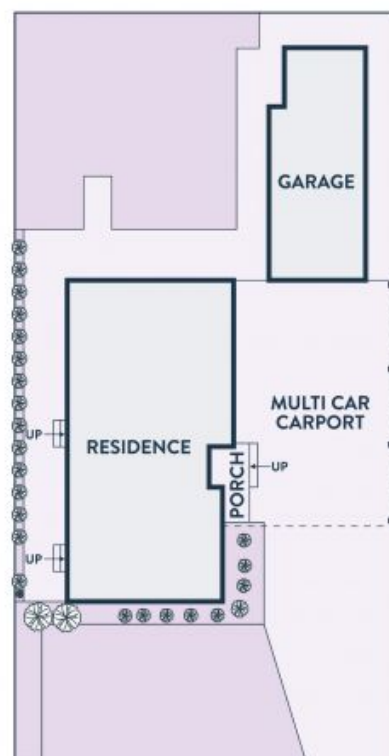
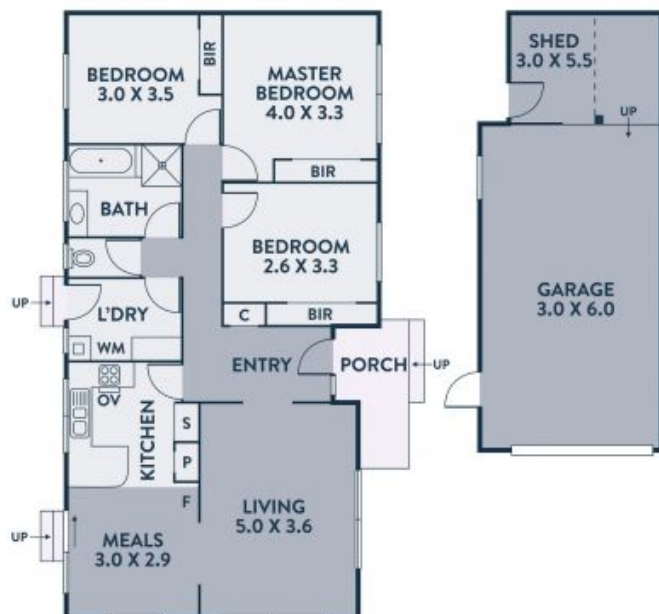
Auction This Saturday - \$550,000 - \$605,000



**Jim Kalakias**

0402 177 336

jim.k@lovere.com.au



Every precaution has been taken to establish accuracy of the information in this brochure but does not constitute any representation by the vendor or agent.

52 Northumberland Drive

Epping, VIC

LOVE & CO