



12/62 Anzac Drive Wollert, VIC



2



1



1

## A Winner For The Beginner

This contemporary home on an easy to manage allotment within a few minutes of local shops and schools and a short drive from everything Wollert/Epping has to offer delivers an effortless, light filled indoor-outdoor lifestyle. The ground floor introduces generous open plan living anchored by a stone kitchen featuring quality stainless steel appliances and opening to artificial lawn space in a private rear yard. The first floor offers two bedrooms both with built in robes along with central bathroom with double vanity.

- Remote single garage with internal access
- Ducted refrigerated climate control (x2 units)
- Tiles to all wet areas and carpet in bedroom
- Dishwasher
- Easy to manage courtyard garden
- Euro laundry

**Price:** \$415,000

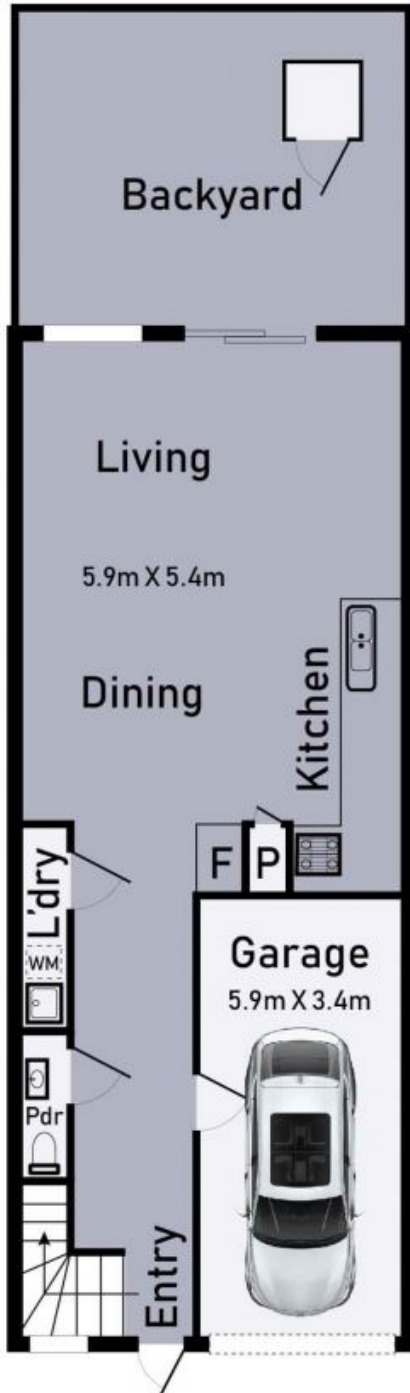


**Jim Kalakias**

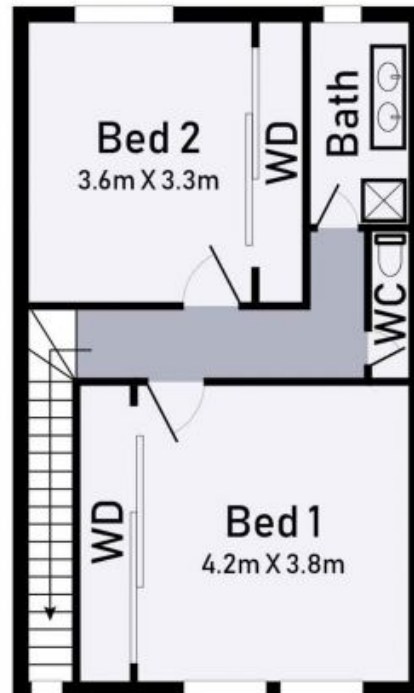
0402 177 336

jim.k@lovere.com.au

# Ground Floor



# First Floor



12/62 Anzac Drive, Wollert

\* Dimensions are approximate and for illustrative purposes only



12/62 Anzac Drive

Wollert, VIC