



18/7 Dunstans Court Thomastown, VIC

Thomastown Warehouse In Prime Location

Conveniently located office/ warehouse within Dunstans Court Industrial Park close to the Metropolitan Ring Road, Keon Park train station and next door to Bunnings Thomastown.

- 6 metre high internal clearance with 5 metre high electric roller shutter door container access.
- On site parking.
- Zoned Industrial 1.
- 3 phase power.
- Ground floor carpeted offices with heating and cooling of 30 SQM (approx.)
- Ground floor male and females toilets and kitchenette area of 10 SQM (approx.)
- Mezzanine lunchroom/meeting area with heating/cooling of 18 SQM (approx.)

Council Rates: \$0.00 p/q

Water Rates: \$0.00 p/q

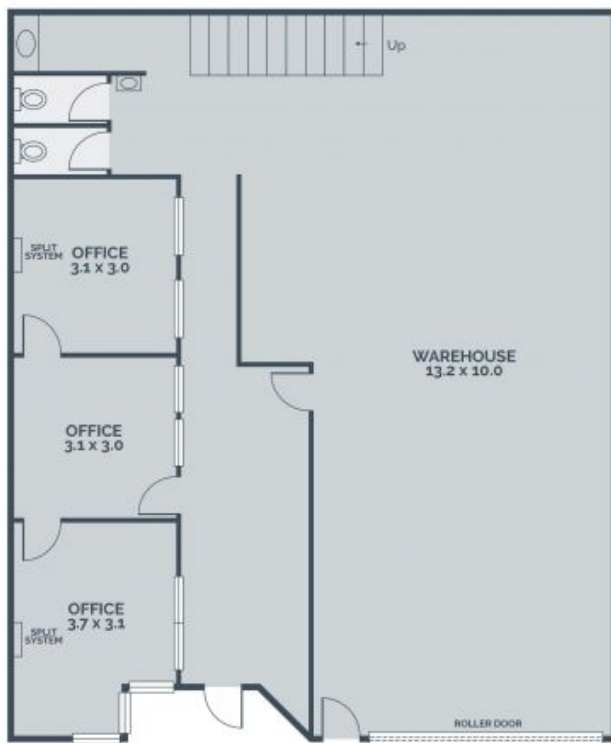
Strata Rates: \$0.00 p/q



Michael Sabelberg

0450 554 317

michael.s@lovere.com.au



Every precaution has been taken to establish accuracy of the information in this brochure but does not constitute any representation by the vendor or agent.

