



6/176 Lower Heidelberg Road Ivanhoe, VIC

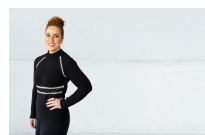


LARGE ONE BEDROOM APARTMENT IN A SOUGHT AFTER LOCATION

This freshly painted overly spacious one-bedroom apartment is located on the ground floor in one of Melbourne's most sought after areas. Great sized lounge room with brand new, wall to wall carpets, open plan with divided dining area, light and bright with access to balcony. Separate modern kitchen, with gas cooking facilities. Large sized bedroom again with brand new wall to wall carpets and built in robes. Bathroom with laundry facilities and brand new blinds fitted throughout. Off street parking also available. This apartment is located at the rear of the block away from the street. Bus on your doorstep and a short stroll to train station. Minutes walk to shops and parks and a short drive to the freeway.

To Apply:

Price: \$320 per week



Niki Castro

0414 334 900

niki.c@lovere.com.au