

2/13-15 Kalimna Street Preston, VIC



2



1



1

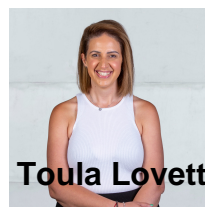
WALK TO EVERYTHING!

- 2 bedrooms with robes
- Separate lounge
- Gas heating
- Carpet throughout
- Central bathroom
- Private low maintenance courtyard
- Lockup garage

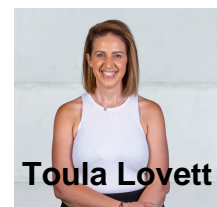
Price: \$385 PW

Walking distance to everything including the Regent Train station, Gilbert Road Trams and all the shops you need.

LOVE & CO NO.1 FOR PROPERTY MANAGEMENT



Toula Lovett



Toula Lovett

lovmillpark@mail.inspectrealest.com.au | lovmillpark@mail.inspectrealest.com.au