



8 Euroa Street Epping, VIC



A Lifestyle Of Complete Convenience

This three bedroom, two bathroom family home will be sure to impress!

Price: 540 PW

Moments away from Lyndarum Village's supermarket, shopping, cafe and dining options, close to the bus and primary school. This three bedroom with study and two bathroom home is perfect for those looking to enjoy a lifestyle location.

With a huge alfresco area, complementing formal living and casual living meals overlooked by a superb kitchen lifestyle convenience is yours for the taking.

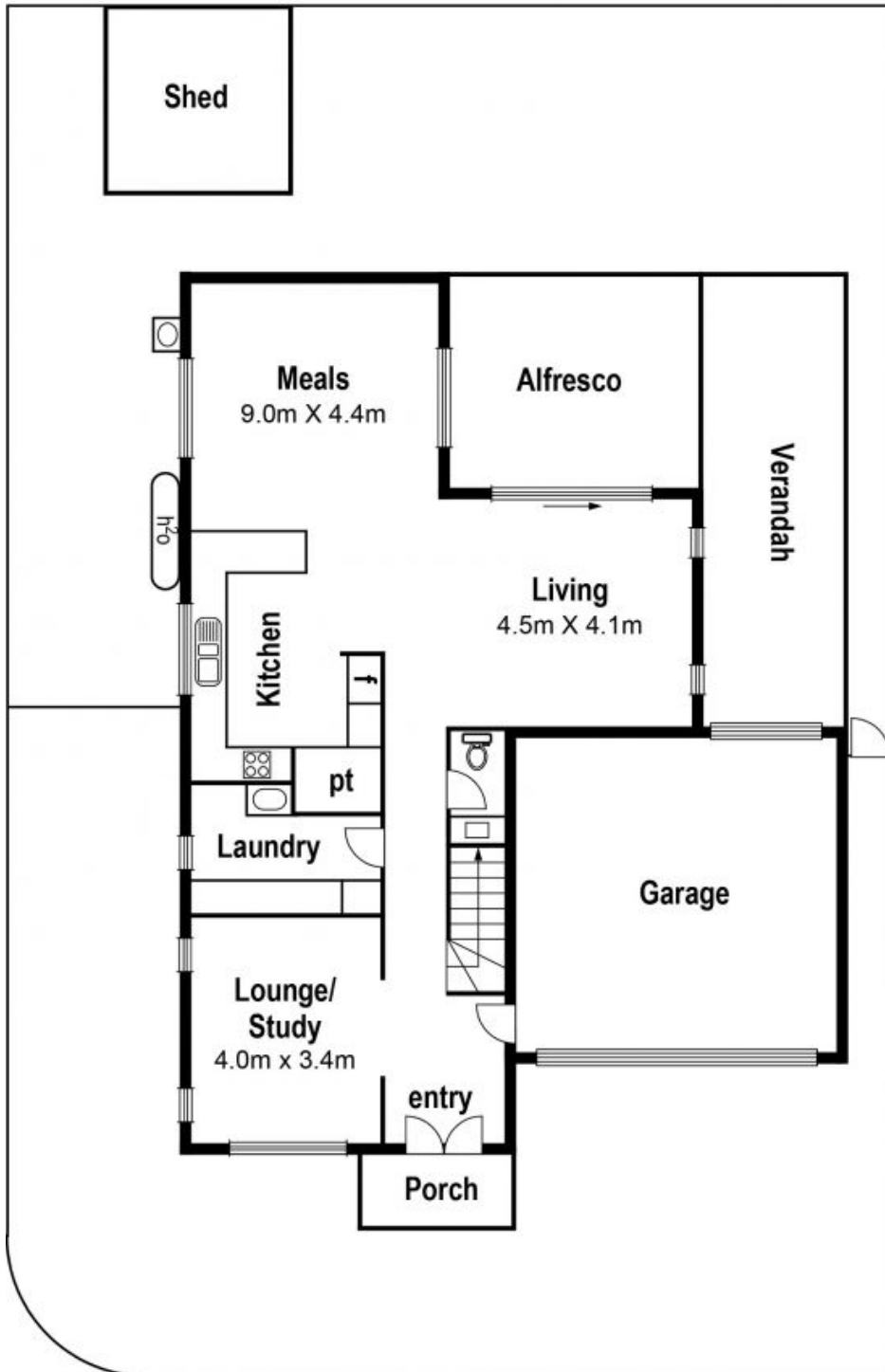
- * All stainless steel appliances,
- * Ease of double garage with rear roller door to alfresco
- * Year round comfort of ducted heating and cooling
- * Choice of formal and casual living zones



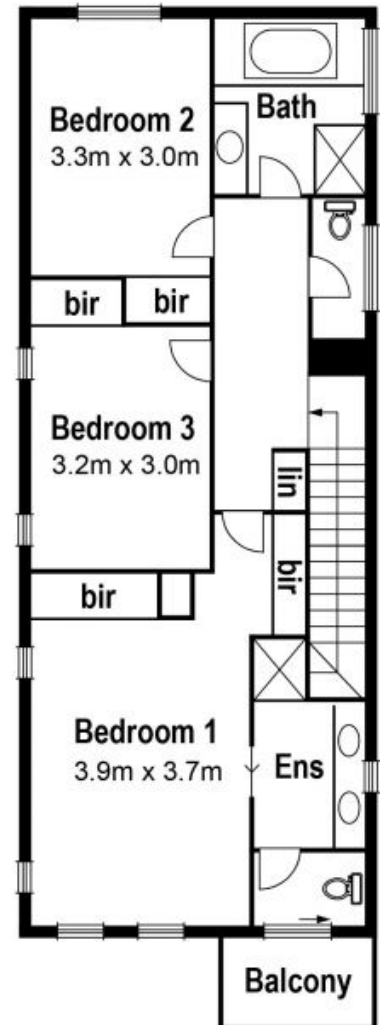
Rachael Wallace

loverealestate@mail.inspectreale

8 Euroa St. Epping



First Floor



8 Euroa Street

Epping, VIC

The information contained herein has been obtained through sources deemed to be reliable but cannot be guaranteed as to its accuracy. Any information of special interest should be obtained through independent verification.