



4/23 Grimwade Street Reservoir, VIC



### Ideal To Call Home

This spacious 2 bedroom Unit is built for comfort and located off Gellibrand Crescent, walking distance to all amenities, making it an ideal place to call home. Featuring:

- 2 large sized bedrooms with newly installed carpet and built in robes
- Fully tiled kitchen/meals and separate lounge area
- Ducted heating and evaporative cooling throughout
- Modern kitchen with stainless steel appliances (gas/electric) and a dishwasher
- Spacious sized bathroom with separate shower and bath
- Gas hot water service
- Fully landscaped gardens
- Private rear yard
- Lock up garage

**Price:** \$380 per week

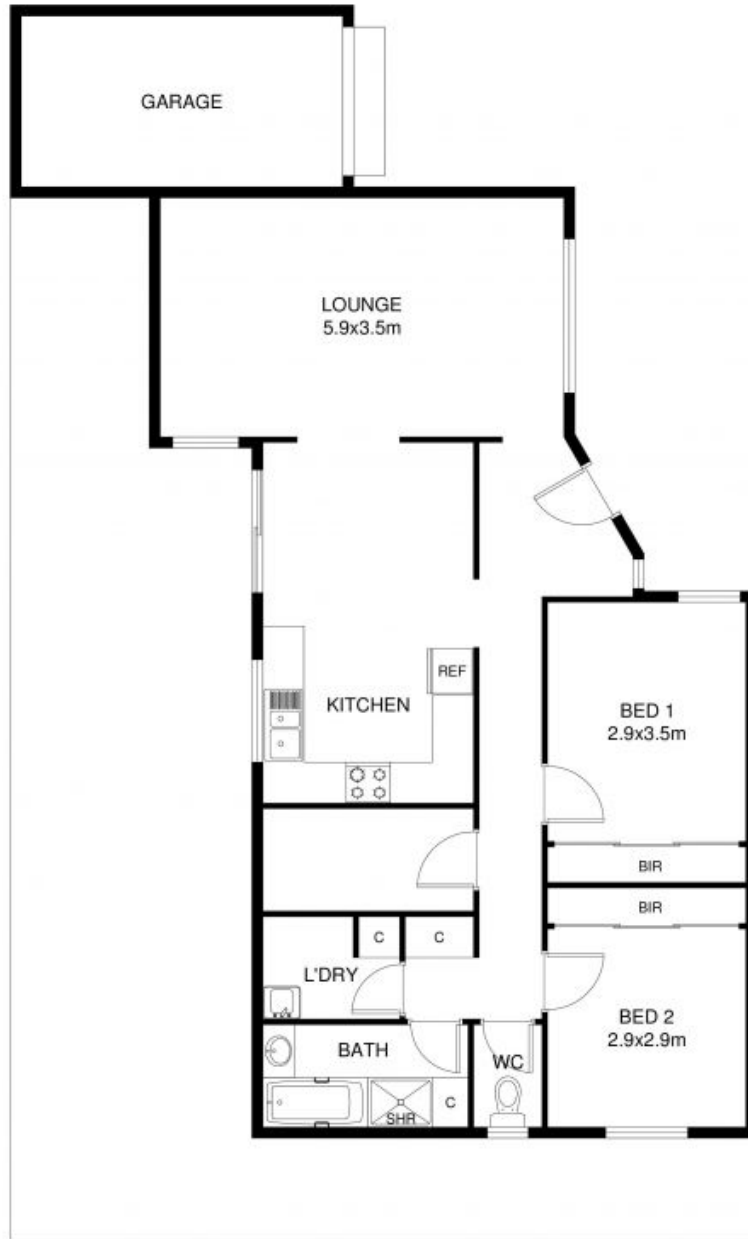


**Regina Aparo**



**Regina Aparo**

loverealestate@mail.inspectrealestate@mail.inspectreale



FLOOR PLAN