



2/4 Woolnough Drive Mill Park, VIC



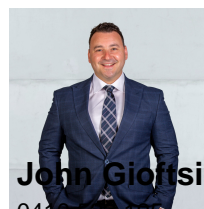
Position, Privacy & Proportions

Investors and first-time buyers, this immediately inviting home is an exceptional entry-level opportunity in a handy pocket, just a short walk to Epping Station.

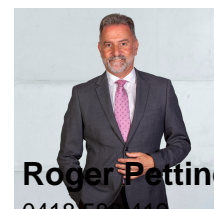
Price: \$490,000

Stylish and low-maintenance, the spacious interior offers two bedrooms (main opening directly to the large bathroom), generous living room merging seamlessly with the family meals overlooked by a pristine kitchen. With a fabulous entertainers courtyard, fully undercover for year round enjoyment, it's a serene, secluded, single-level haven!

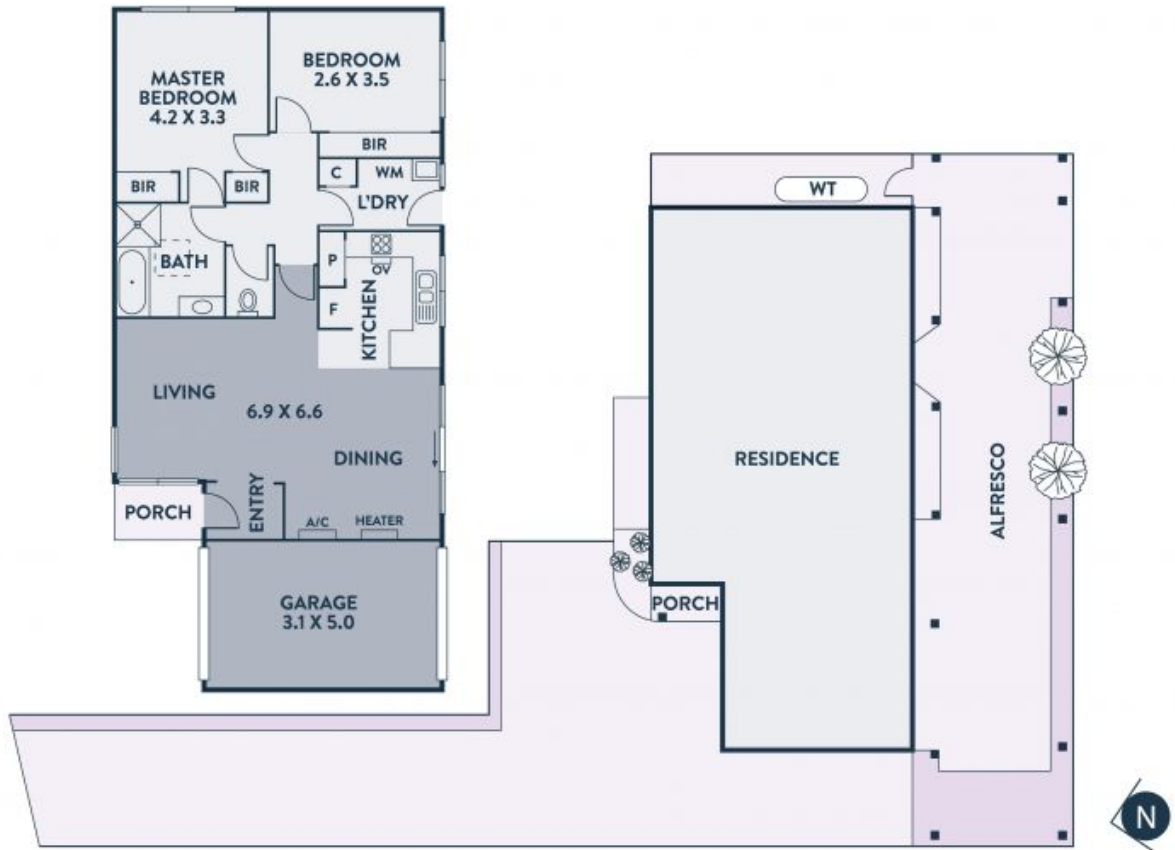
- ? Gas heating & Split system unit
- ? Robes to both bedrooms
- ? Garage plus additional off-street parking for up to 4 cars
- ? Pristine kitchen
- ? Two way bathroom to main bedroom



John Giotsidis
0416 522 195
john.g@lovere.com.au



Roger Pettinella
0418 588 419
roger.p@lovere.com.au



Every precaution has been taken to establish accuracy of the information in this brochure but does not constitute any representation by the vendor or agent.

2/4 Woolnough Drive

Mill Park, VIC

LOVE & CO