



23 Friendship Avenue Mill Park, VIC

 3

 2

 2

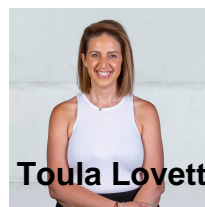
FABULOUS FAMILY HOME - DONT MISS OUT!

Situated by Mill Park Heights Primary School (as well as other primary and secondary schools - St Francis Primary, Mill Park Secondary), within walking distance to Stables Shopping Centre, multiple parks and close to Westfield Plenty Valley.

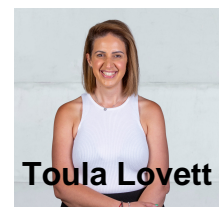
Comprising;

- 3 great sized bedrooms
- Master with WIR & Ensuite
- Sunken lounge room with polished timber floors
- Kitchen with adjoining family meals area
- Central bathroom and separate laundry
- Ducted heating & Evaporative cooling
- Good size, low maintenance backyard
- Double lock up garage

Price: \$440 Per Week



Toula Lovett



Toula Lovett

lovmillpark@mail.inspectrealest.com.au | lovmillpark@mail.inspectrealest.com.au