



Shop 23-25/314 Childs Road Mill Park, VIC

FULLY FITTED HIGH PROFILE OFFICE

Surrounded by Schools, Sporting and Medical Facilities, The Stables Shopping Centre is an established shopping precinct anchored by major retailers such as Woolworths, BWS and a host of food/entertainment options.

- Total Building Area: 189SQM (approx.)
- Superbly fitted office with data cabling throughout
- Flexible layout with a mix of portioned office spaces, reception area, boardrooms, meeting rooms, kitchenette, storage options and open plan space
- Multiple access points.
- Heating and cooling throughout
- Excellent customer parking
- Attractive lease terms.

Council Rates: \$0.00

Water Rates: \$0.00

Strata Rates: \$0.00



Graham Love

0418 534 450

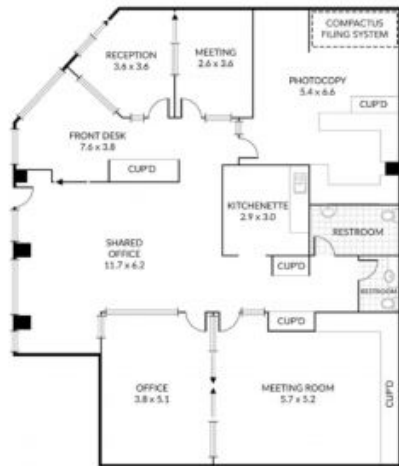
graham.l@lovere.com.au



Branko Agatanovic

0448 035 565

branko.a@lovere.com.au



NOTE: Every precaution has been taken to verify the accuracy of the above details. However, prospective purchasers are advised to make their own enquiries.