



36A Edwardes Street Reservoir, VIC

CENTRAL RESERVOIR COMMERCIAL SPACE!

First floor office / studio space of 280 sqm (approx) located in the heart of Reservoir with separate access from Edwardes Street and rear car parking.

Features includes

- large open rooms,
- lunch room / kitchenette and separate toilets
- Will suit a variety of uses (STCA)
- Long term lease available.

Council Rates: \$0.00 p/q

Water Rates: \$0.00 p/q

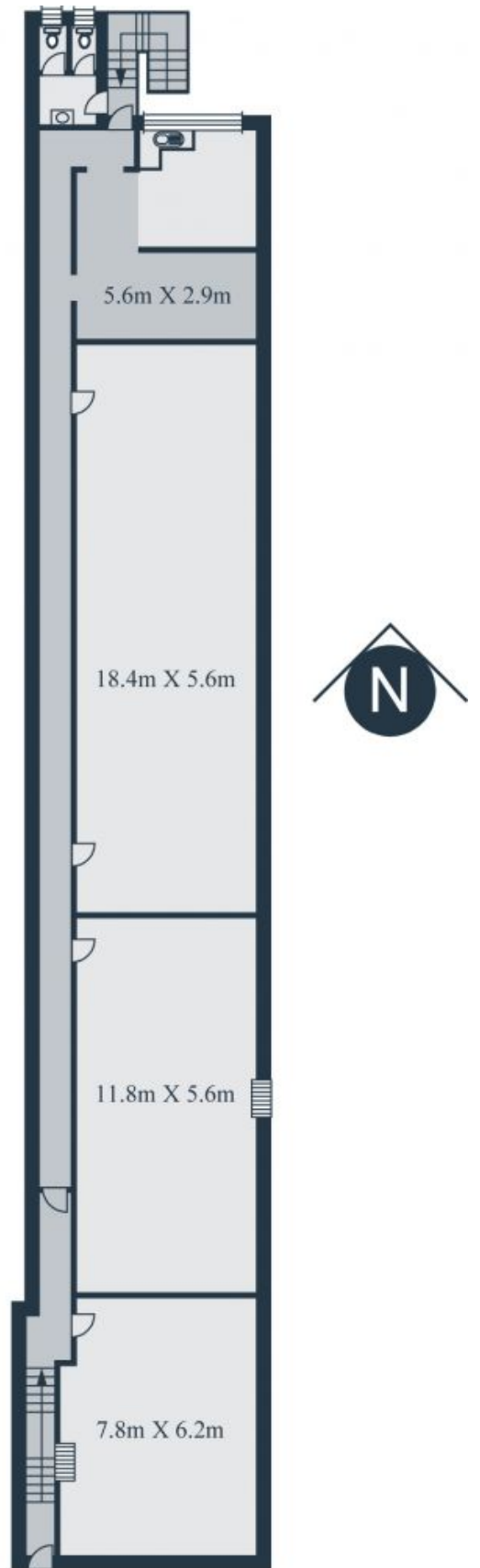
Strata Rates: \$0.00 p/q



Michael Sabelberg

0450 554 317

michael.s@lovere.com.au



Every precaution has been taken to establish accuracy of the information in this brochure but does not constitute any representation by the vendor or agent



36A Edwardes Street

Reservoir, VIC