



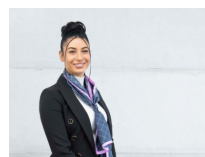
2/14 Highland Street Kingsbury, VIC



THE BEST UNIT KINGSBURY HAS TO OFFER!

In a block of only three this unit is in a great location close to Latrobe and RMIT and within walking distance to the tram. In great condition with all modern appliances throughout and gas cooking. Great sized bedrooms with wall to wall carpets. Reverse cycle air conditioning and heating, seperate laundry with washing machine facilities, a carport and great front and rear yard which includes a brand new decking area great for entertaining or as your own little oasis. A must see. LOVE&CO PRESTON - NO 1 FOR PROPERTY MANAGEMENT ** Please note that all inspection times are subject to change **

Price: \$360 per week



Stacey Grima

lovecopreston@mail.inspectreale