



35 Westall Street Thomastown, VIC



Beautifully Updated Family Home!

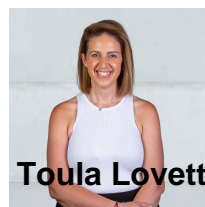
This updated home is perfect for any family looking to move into a prime Thomastown location. The open-plan living is the heart of this single level gem, generating instant appeal with its Tasmanian Oak timber flooring and access to the large undercover entertainment area, presenting the perfect space for family/friends gatherings on big occasions and plenty of personal space in quieter times.

The gourmet kitchen makes a stylish statement with its sleek 40m Caesar stone benchtops, stainless steel appliances, colour-matched dishwasher, and loads of storage space.

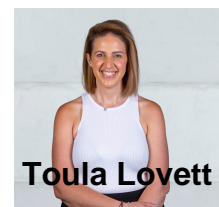
Please see below for a detailed list of features:

- Recently Updated home
- 2 x split system Heating & Cooling

Price: \$450 Per Week



Toula Lovett



Toula Lovett

lovemillpark@mail.inspectrealest.com.au | lovemillpark@mail.inspectrealest.com.au



The floor plan is not to scale; measurements are indicative and in metres. All features included in this 3D plan are for inspiration purposes only. This is not an exact replica of the property or the position of exterior elements. Plans should not be relied on. Interested parties should make and rely on their own enquiries.

35 Westall Street

Thomastown, VIC

LOVE & CO