



6 Ginninderry Grange Mernda, VIC

 3

 2

 2

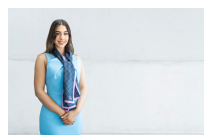
WARMTH AND AMBIANCE

Perfectly positioned with leafy surrounds, this home is sure to delight and offers a rare opportunity to secure a home that places an emphasis on comfortable living, complete with size, security and endless extras throughout.

Features Include:

- An inviting tranquil entrance
- A delightfully bright lounge room and open plan kitchen and meals area.
- The well-appointed kitchen overlooks a private yard and is bathed in natural light.
- Convenience of gas cooking facilities and an abundance of cupboard space.
- Three large bedrooms with built in robes, including a Master bedroom with ensuite.
- Main bathroom with a separate toilet.

Price: \$450 per week



Victoria Kantaras

lovepping@mail.inspectrealestat