



13/1 Austarc Avenue Thomastown, VIC

## GREAT VALUE WAREHOUSE/FACTORY

- Factory/ Warehouse space of 812 SQM (approx.)
- 3 phase power available
- 3x roller door access
- onsite parking
- Zoned Industrial 1
- Easy access to Western Ring Road
- Available from November 10th

### Rental:

\$73,000 pa, \$6,083.33 pcm, \$1,403.84 pw  
(Plus outgoings and GST)

**Council Rates:** \$0.00 p/q

**Water Rates:** \$0.00 p/q

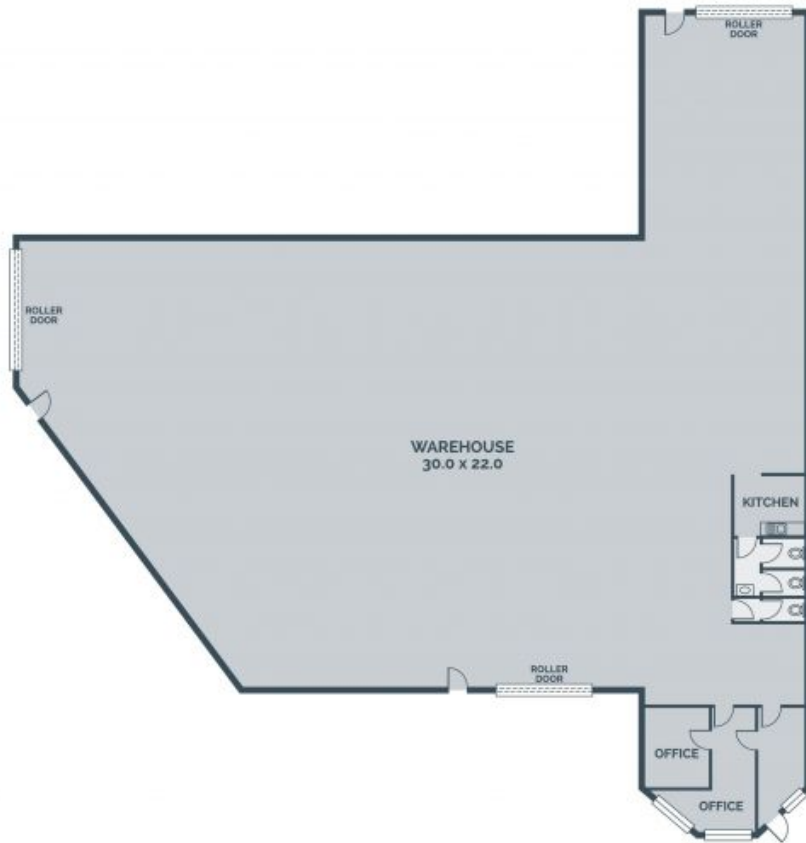
**Strata Rates:** \$0.00 p/q



**Michael Sabelberg**

0450 554 317

michael.s@lovere.com.au



Every precaution has been taken to establish accuracy of the information in this brochure but does not constitute any representation by the vendor or agent.

**LOVE & CO**

**13/1 Austarc Avenue**

**Thomastown, VIC**

**LOVE & CO**