



22 Epsom Avenue Epping, VIC



Newly Renovated!!

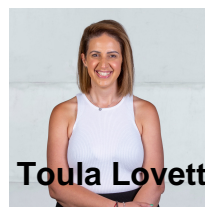
This newly renovated home...

Price: \$390 Per Week

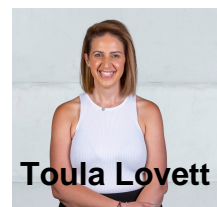
Comprises;

- New Kitchen
- New bathroom
- New carpets throughout
- Freshly painted
- Split System
- Single lock up garage

All of this and a central location that places you between the amenities and services of South Morang and Epping. The bus stop is within walking distance and you're also close to Meadowglen Primary School, the Epping Skatepark, the local IGA and Winchester Avenue Reserve with a playground. An 8-minute drive will take you to the Epping Plaza shopping centre and there are a host of great schools nearby.



Toula Lovett



Toula Lovett

lovemillpark@mail.inspectrealest.com.au | lovemillpark@mail.inspectrealest.com.au